

INSTRUCTION MANUAL



MYTON

Specifications

	MAS-40	MAG-40
Air Pressure	6 kgf/cm ² (85 psig)	6 kgf/cm ² (85 psig)
Air Consumption (no load)	0.45 m ³ /min (15.9 cfm)	0.68 m ³ /min (24.1 cfm)
No Load Speed	13,000 r.p.m.	13,000 r.p.m.
Depressed Center Wheel Sanding Disc Dia.	100 mm (4")	100 mm (4")
Weight	0.9 kgf (2 lbs)	1.4 kgf (3.1 lbs)

These specifications and the shape may be changed for improvement without prior notice.



TOMORROW'S HAND TOOL ENGINEERING TODAY

NITTO
NITTO KOHKI CO., LTD.

9-4, Nakaikegami 2-chome, Ohta-ku, Tokyo, Japan
Tel: Tokyo 3755-1111 Cable Address: NITOHIND TOKYO
Fax: 3753-8791

Distributed by:

Thank you for purchasing a Myton product.

We are confident the tool will meet your expectation in power and performance and provide years of efficient on-the-job service and dependability.

These Myton products are designed to help you do a better job in less time and with less effort through unique speed and efficiency features.

Your dealers as well as Nitto Kohki agents provide servicing for these products and provide information for proper tool operation for matters not covered in this instruction manual. Nitto Kohki takes pride in its modern hand tool engineering and is confident you will be satisfied with its products.

Please take the time to read and become familiar with this instruction manual and the safety rules set forth which are for your protection.

SAFETY RULES

IMPORTANT: READ ALL INSTRUCTIONS BEFORE USING!

1. Always wear safety goggles or other eye protection when using these products and face or dust mask if necessary.
2. Always have wheel guard in place when operating grinder.
3. Keep work area clean and uncluttered.
4. Do not expose products to rain or operate products in damp or wet places.
5. Only operate products in well lit work area.
6. Keep children and others away from work area.
7. Keep tools stored in dry protected area out of reach of children.
8. Make sure you use the right tool for the job to avoid misuse or forcing of tool.
9. Maintain and service tools for better and safe performance.
10. Dress properly with overalls or work outfit to avoid loose clothing or jewelry getting caught in moving parts. Keep long hair covered or protected.
11. Never operate tools faster than its rated speed.
12. Look for damaged parts. Do not use a wheel that is chipped or cracked or wet from water or any other liquid.
13. If new or different grinding wheel is used hold tool under a bench or in a way to avoid the path of broken wheel parts should the wheel be defective and run the tool for sixty seconds from this safe position.
14. Do not operate tools near flammable liquids or in gaseous or explosive atmospheres as sparks could ignite fumes.
15. Use only identical replacement parts.

Preface

Myton is precision pneumatic tool designed to display maximum performance in daily grinding operations. Your care in handling Myton is however, important if performance is to be realized over a long period of time. This instruction manual is prepared to equip you with the knowledge necessary to keep Myton on the job efficiently.

1. Main Applications

- Grinding and polishing steel, cast-iron, and nonferrous metals.
 - Grinding and deburring welded and fused connections.
 - Grinding and polishing stainless steel, vessel plates, and vehicle plates.
 - Finishing fiber, synthetic resin, and molded products.
 - Finishing metallic dies.
 - Removing base paint from metal surfaces.
 - All finishing jobs that normally would be made using a file or chisel.
- MAG-40** is a general use grinder that uses a depressed center wheel.
- MAS-40** is a light-duty sander that uses a sanding disc;

⚠ WARNING

Do not USE MAS-40 with a depressed center wheel.

2. Safety Warnings

- Using grinder improperly could result in serious injury.

Read the following instruction.

2-1. CHECK SPINDLE SPEED

Daily before using, WITH NO WHEEL ON TOOL, check spindle speed with a tachometer.

2-2. RPM ON WHEEL MUST EXCEED GRINDER RPM.

If the max. wheel RPM indicated on the wheel is less than Tool RPM, the wheel may break off and will cause dangerous scattering of broken pieces.

2-3. ALWAYS WEAR EYE PROTECTION

Always wear safety goggles or Other eye protection when using these products and let persons close to the operating spot wear safety goggle in order to protect eyes from ground dusts. We also recommend the use of dust mask as well.

2-4. DON'T TOUCH WHEEL AND ROTATING PARTS

Do not let your hands, hair clothing, etc., come into contact with the rotating parts when starting up and operating the tool.

2-5. DISCONNECT AIR HOSE

When changing the wheel or the sanding disc, be sure to disconnect from the air line to avoid unintentional start which may cause danger.

2-6. PROTECT BODY

Make sure to protect yourself by wearing gloves, long-sleeved shirts, etc. while operating the tool because ground dusts are apt to scatter during the operations.

2-7. DO NOT USE IN HAZARDOUS AREAS

Never use the tool in dangerous zones where flammable materials such as lacquer paint, thinner, benzene, gasoline, bonding glue, etc. are stored.

2-8. CHECK BEFORE BEGINNING WORK

Before starting with operation, check if all the screws on each part are firmly in place and no parts are missing.

2-9. DON'T RECONSTRUCT OR MODIFY

Never use this tool if it is reconstructed or modified and when parts are removed. Never use this tool without the wheel guard. Otherwise, unexpected accidents may take place due to scattering of the grounddusts or broken pieces of wheel.

3. Cautions for use

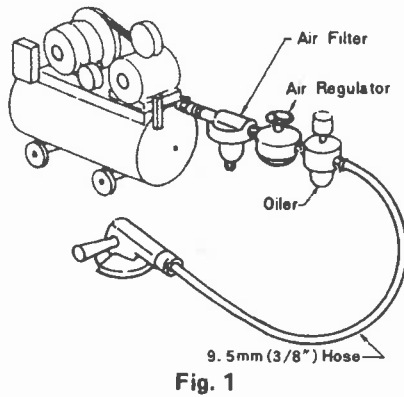
3-1. AIR PRESSURE

Air pressure largely determines tool performance. Myton is designed to be operated at a gauge pressure of 5~6.5 Kgf/cm² (70~92 psig). A lower pressure range reduces performance.

⚠ WARNING

If this tool is operated at higher pressure than the rated one, it will rotate excessively fast and the wheel may break off causing injury and parts may break down

3-2. AIR LINE (Fig. 1)



Use a 3/8" air hose between the compressor and the tool. Compressed air is cooled and its water content separated, as soon as the air leaves the compressor. A portion of the water content, however, is condensed in the piping, and can enter the tool mechanism, and may cause trouble. So, install an air filter and an oiler between the compressor and the tool.

3-3. AIR HOSE

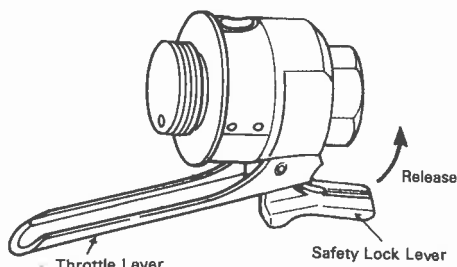
Blow compressed air through the supply hose before connecting the tool.

3-4. LUBRICATION

Before connecting the hose apply 4 or 5 drops of # 10 machine oil at the air inlet. (No lubrication is required when oiler is used) Use of a thicker oil can lead to reduced performance or malfunction. If a thicker oil is used by accident, wash it away immediately. Also, every 1 or 2 hours of operation oiling is necessary.

3-5. DOUBLE LOCK SAFETY LEVER (For MAG-40 only) (Fig. 2)

Before gripping the throttle lever, release the safety lock lever mounted on the rear of throttle lever to unlock the safety lock.



4. Depressed Center Wheel or Sanding Disc

4-1. DEPRESSED CENTER WHEEL FOR MAG-40

⚠ WARNING

Before mounting a new depressed center wheel on MAG-40, check it carefully for cracks. A cracked depressed center wheel can cause serious injury if it breaks and flies off. When starting the tool (with a new or replacement wheel installed) hold the tool in a well protected area and let run for one minute.

For maximum performance, use the edge of the depressed center wheel or sanding disc in operations. Replacement of a depressed center wheel is necessary when the diameter is worn to 60mm. Refer to the table below when ordering a new depressed center wheel for MAG-40.

Grinding object	Grain	Bonding agent	Bonding degree	Grain	
Ordinary steel Cast iron	A	B	The degree of bonding is indicated by alphabet Use a soft grinding wheel for soft materials and hard one for hard materials And soft wheel for smooth surface materials and a hard one for rough surface materials	A G very soft	
Special steel Stainless steel High speed steel Alloy steel	WA	B		H.K soft	Use #12 #13 rough grinding particles for deburring cracks chamfering and rust removal #80 #60 for intermediate finishing and #80 #120 for fine finishing.
Stone rubber porcelain nonferrous metal wood	C	B		L.O medium	
Super hard alloy	GC	B		P.S. hard	
			T.Z. very hard		

4-2. SANDING DISC FOR MAS-40

Use 100mm (4") diameter sanding discs with 16mm arbor hole for MAS-40.

⚠ WARNING

Do not use MAS-40 with a depressed center wheel

SAVE THESE INSTRUCTIONS

5. Storage

Avoid storing the tool in a high humid location. If the tool is left as it is used, residual moisture on the inside can cause rusting. Before storing and after operation oil the tool at the hose coupling opening with spindle oil and run it for a short time.

⚠ WARNING

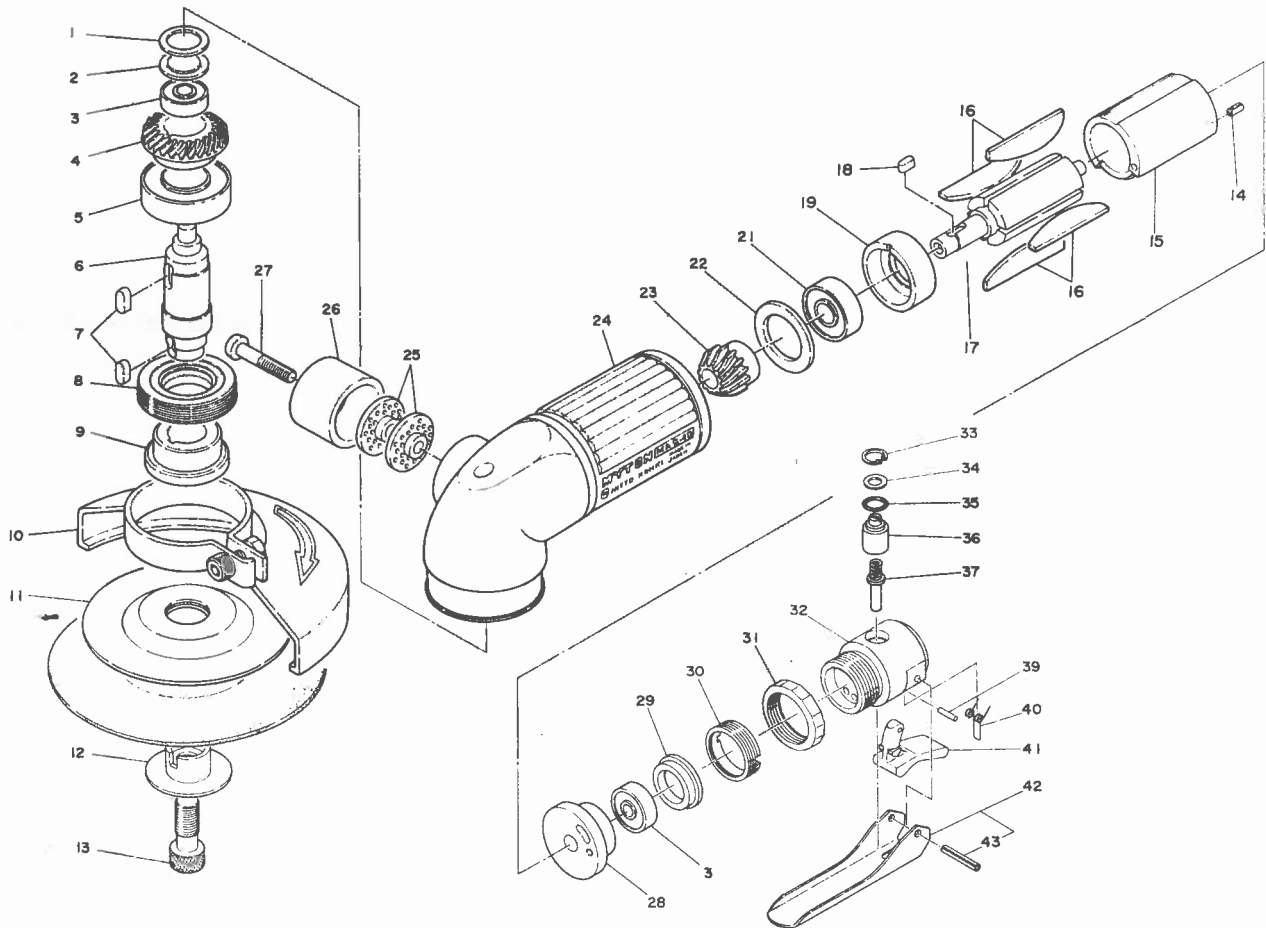
Keep this tool out of reach of children.

6. Ordering Service Parts

- ★ For further operational and handling information or for replacement of parts and components, contact the sale agent from whom you purchased the tool or the service division of our company.
- ★ In ordering parts and components, give each part number, name and part quantity.

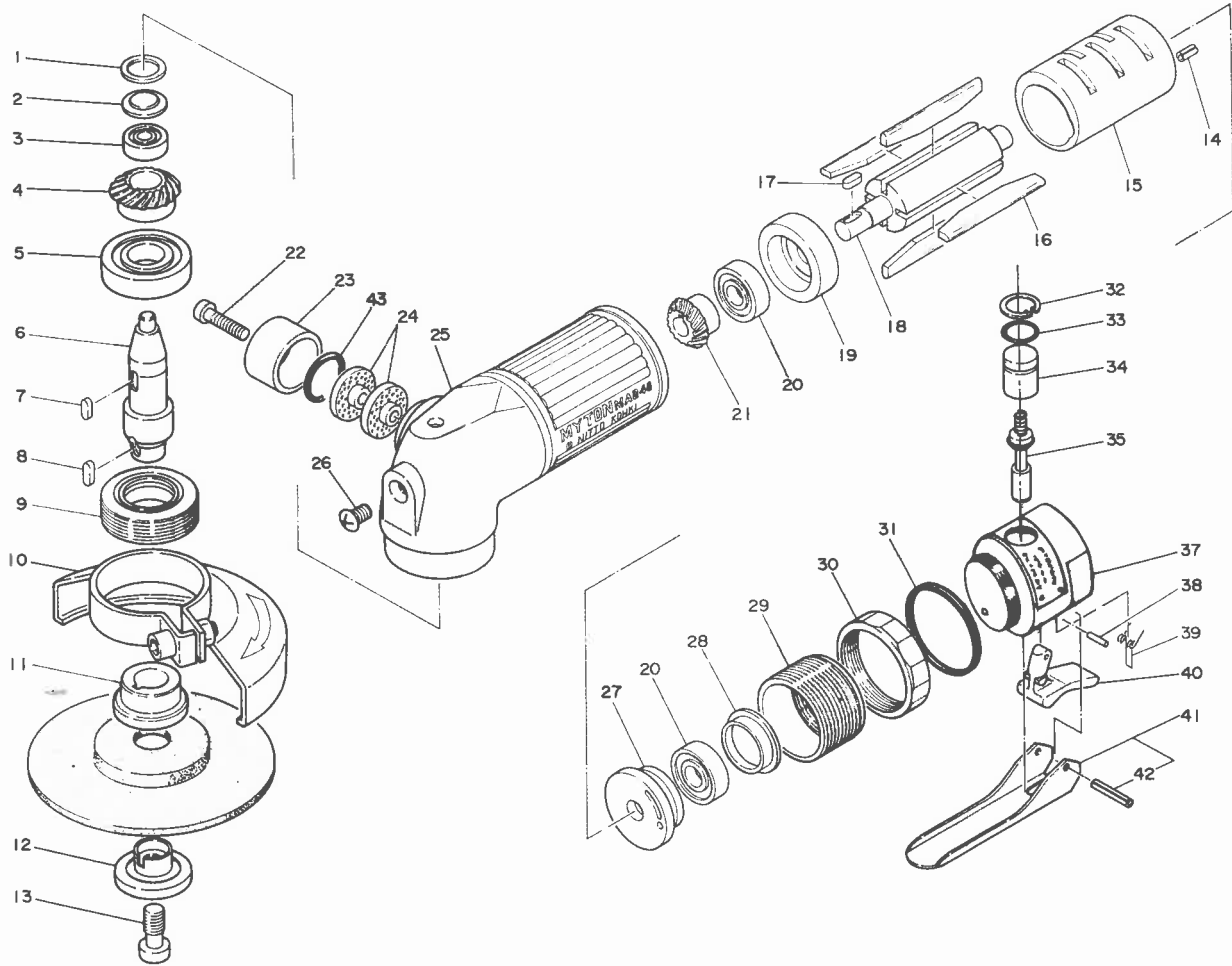


6. Myton (MAS-40) Assembly and Parts List



No.	Parts No.	Parts Name	Q'ty	Price	No.	Parts No.	Parts Name	Q'ty	Price
1	TP10826	Packing	1		26	TP14041	Exhaust Cover	1	
2	TP10100	Bearing Cover	1		27	LP08450	Cross-recessed Pan Head Machine Screw 5×25	1	
3	TPO3933	Ball Bearing 606ZZ	2		28	TP10109	End Plate A	1	
4	TP10116	Gear	1		29	TP10110	Cap	1	
5	TP00539	Ball Bearing 6002ZZ	1		30	TP10098	Lock Nut	1	
6	TP14933	Spindle	1		31	TP03468	Lock Ring	1	
7	TP00502	Sunk Key 4×4×9.5	2		32	TP15211	Valve Body	1	
8	TA91054	Bearing Set Screw Ass'y	1set		33	TP03695	Retaining Ring C-12	1	
9	TP10213	Lock Plate	1		34	TP06326	Spacer 6×12×1.2	1	
10	TA99145	Wheel Guard Ass'y	1set		35	TP11997	O Ring KS-7	1	
11	TP14948	Sanding Pad	1		36	TP06325	Adjust Valve	1	
12	TP14944	Disc Lock φ16	1		37	TA99300	Valve Stem Ass'y	1set	
13	TP09932	Disk Lock Bolt	1		39	TP09434	Spring Pin 2×12	1	
14	TP00496	Spring Pin 2.5×6	1		40	TP14340	Torsion Coil Spring	1	
15	TP06121	Cylinder	1		41	TP14339	Lock Lever	1	
16	TA9A287	Blade Ass'y (4 pcs.)	1set		42	TA96253	Throttle Lever Ass'y	1set	
17	TQ10706	Rotor	1		43	(TP01921)	Spring Pin 3×18	1	
18	TP10107	Sunk Key 3×3×8	1						
19	TP14931	End Plate B	1						
21	TP00468	Ball Bearing 608ZZ	1			TP00474	Single Ended Spanner 17	1	
22	TP10101	Spacer 19×28×2	1			TP00170	Hexagon Wrench Key 6	1	
23	TP10113	Pinion	1			TP02236	Reducer PT1/4×NPT1/4	1	
24	TA99150	Housing Ass'y	1set			TP02380	Hose Nipple NPT1/4×3/8	1	
25	TP14040	Silencer Plate	2						

7. Myton (MAG-40) Assembly and Parts List



No.	Parts No.	Parts Name	Q'ty	Price	No.	Parts No.	Parts Name	Q'ty	Price
1	TP10826	Packing	1		24	TP14040	Silencer Plate	2	
2	TP10100	Bearing Cover	1		25	TA98694	Housing Ass'y	1set	
3	TP03933	Ball Bearing 606ZZ	1		26	TP06715	Cross-recessed Countersunk Head Machine Screw 5×8	1	
4	TP14036	Gear	1		27	TP10137	End Plate A	1	
5	TP01609	Ball Bearing 6202ZZ	1		28	TP10203	Cap	1	
6	TP14035	Spindle (except for U.S.A.)	1		29	TP17446	Adaptor	1	
	TP14349	Spindle (for U.S.A.)	1		30	TP17452	Lock Ring	1	
7	TP00502	Sunk Key 4×4×9.5	1		31	TP17445	O Ring S-35.5	1	
8	TP09933	Sunk Key 4×4×12 (except for U.S.A.)	1		32	TP03473	Retaining Ring C-14	1	
9	TA98634	Bearing Set Screw Ass'y	1set		33	TP11992	O Ring, KS-9	1	
10	TB01208	Wheel Guard Ass'y	1set		34	TP04394	Adjust Valve	1	
11	TQ00774	Lock Plate (except for U.S.A.)	1		35	TA96334	Throttle Valve Ass'y	1set	
	TP10667	Lock Plate (for U.S.A.)	1		37	TB00605	Valve Body Ass'y	1set	
12	TQ00775	Disc Lock φ16(except for U.S.A.)	1		38	TP09434	Spring Pin 2×12	1	
	TP10668	Disc Lock φ16(for U.S.A.)	1		39	TP14340	Torsion Coil Spring	1	
13	TP09932	Disk Lock Bolt (except for U.S.A.)	1		40	TP14339	Lock Lever	1	
14	TP04061	Spring Pin 3×6	1		41	TA96253	Throttle Lever Ass'y	1set	
15	TP14031	Cylinder	1		42	TP01921	Spring Pin 3×18	1	
16	TA9A294	Blade Ass'y (4 pcs.)	1set		43	CP20180	O Ring P-18	1	
17	TP10130	Sunk Key 3×3×10	1						
18	TP14033	Rotor	1						
19	TP14034	End Plate B	1						
20	TP10133	Ball Bearing 609ZZ	2			TP00170	Hexagon Wrench Key 6 (except for U.S.A.)	1	
21	TP14030	Pinion	1			TP00474	Single Ended Spanner 17	1	
22	LPO8450	Cross-recessed Pan Head Machine Screw 5×25	1			TP18547	Spanner (for U.S.A.)	1	
23	TP14041	Exhaust Cover	1			TP00864	Reducer M16×NPT3/8	1	
						TP01355	Hose Nipple NPT3/8×3/8 (except for U.S.A.)	1	

