

INSTRUCTION MANUAL

Model
MAS-70



Model
MAG-70

MYTON

Specifications

		MAS-70	MAG-70
Air Pressure		6 kgf/cm ² (85 psig)	6 kgf/cm ² (85 psig)
Air Consumption	no load	0.98 m ³ /min (34.6 cfm)	0.67 m ³ /min (23.7 cfm)
	full load		1.15 m ³ /min (40.6 cfm)
No Load Speed		7,500 r.p.m.	7,000 r.p.m.
Depressed Center Wheel Sanding Disc Dia.		180 mm (7")	180 mm (7")
Weight		1.9 kgf (4.2 lbs)	3.4 kgf (7.5 lbs)

These specifications and shape may be changed for improvement without prior notice.



TOMORROW'S HAND TOOL ENGINEERING TODAY
NITTO
NITTO KOHKI CO., LTD.

9-4, Nakaikogami 2-chome, Ohta-ku, Tokyo, Japan
Tel: Tokyo 3755-1111 Cable Address: NITOHIND TOKYO
Telex: 3246-6467 NITTO J

Distributed by:

Thank you for purchasing a Myton product.

We are confident the tool will meet your expectation in power and performance and provide years of efficient on-the-job service and dependability.

These Myton products are designed to help you do a better job in less time and with less effort through unique speed and efficiency features.

Your dealers as well as Nitto Kohki agents provide servicing for these products and provide information for proper tool operation for matters not covered in this instruction manual. Nitto Kohki takes pride in its modern hand tool engineering and is confident you will be satisfied with its products.

Please take the time to read and become familiar with this instruction manual and the safety rules set forth which are for your protection.

SAFETY RULES

IMPORTANT: READ ALL INSTRUCTIONS BEFORE USING!

1. Always wear safety goggles or other eye protection when using these products and face or dust mask if necessary.
2. Always have wheel guard in place when operating grinder.
3. Keep work area clean and uncluttered.
4. Do not expose products to rain or operate products in damp or wet places.
5. Only operate products in well lit work area.
6. Keep children and others away from work area.
7. Keep tools stored in dry protected area out of reach of children.
8. Make sure you use the right tool for the job to avoid misuse or forcing of tool.
9. Maintain and service tools for better and safe performance.
10. Dress properly with overalls or work outfit to avoid loose clothing or jewelry getting caught in moving parts. Keep long hair covered or protected.
11. Never operate tools faster than its rated speed.
12. Look for damaged parts. Do not use a wheel that is chipped or cracked or wet from water or any other liquid.
13. If new or different grinding wheel is used hold tool under a bench or in a way to avoid the path of broken wheel parts should the wheel be defective and run the tool for sixty seconds from this safe position.
14. Do not operate tools near flammable liquids or in gaseous or explosive atmospheres as sparks could ignite fumes.
15. Use only identical replacement parts.

Preface

Myton is precision pneumatic tool designed to display maximum performance in daily grinding operations. Your care in handling Myton is however, important if performance is to be realized over a long period of time. This instruction manual is prepared to equip you with the knowledge necessary to keep Myton on the job efficiently.

1. Main Applications

- Grinding and polishing steel, cast-iron, and nonferrous metals.
 - Grinding and deburring welded and fused connections.
 - Grinding and polishing stainless steel, vessel plates, and vehicle plates.
 - Finishing fiber, synthetic resin, and molded products.
 - Finishing metallic dies.
 - Removing base paint from metal surfaces.
 - All finishing jobs that normally would be made using a file or chisel.
- MAG-70** is a general use grinder that uses a depressed center wheel.
- MAS-70** is a light-duty sander that uses a sanding disc;

⚠ WARNING

Do not USE MAS-70 with a depressed center wheel.

2. Safety Warnings

- Using grinder improperly could result in serious injury.

Read the following instruction.

2-1. CHECK SPINDLE SPEED

Daily before using, WITH NO WHEEL ON TOOL, check spindle speed with a tachometer.

2-2. RPM ON WHEEL MUST EXCEED GRINDER RPM.

If the max. wheel RPM indicated on the wheel is less than Tool RPM, the wheel may break off and will cause dangerous scattering of broken pieces.

2-3. ALWAYS WEAR EYE PROTECTION

Always wear safety goggles or Other eye protection when using these products and let persons close to the operating spot wear safety goggle in order to protect eyes from ground dusts. We also recommend the use of dust mask as well.

2-4. DON'T TOUCH WHEEL AND ROTATING PARTS

Do not let your hands, hair clothing, etc., come into contact with the rotating parts when starting up and operating the tool.

2-5. DISCONNECT AIR HOSE

When changing the wheel or the sanding disc, be sure to disconnect from the air line to avoid unintentional start which may cause danger.

2-6. PROTECT BODY

Make sure to protect yourself by wearing gloves, long-sleeved shirts, etc. while operating the tool because ground dusts are apt to scatter during the operations.

2-7. DO NOT USE IN HAZARDOUS AREAS

Never use the tool in dangerous zones where flammable materials such as lacquer paint, thinner, benzene, gasoline, bonding glue, etc. are stored.

2-8. CHECK BEFORE BEGINNING WORK

Before starting with operation, check if all the screws on each part are firmly in place and no parts are missing.

2-9. DON'T RECONSTRUCT OR MODIFY

Never use this tool if it is reconstructed or modified and when parts are removed. Never use this tool without the wheel guard. Otherwise, unexpected accidents may take place due to scattering of the ground dusts or broken pieces of wheel.

3. Cautions for use

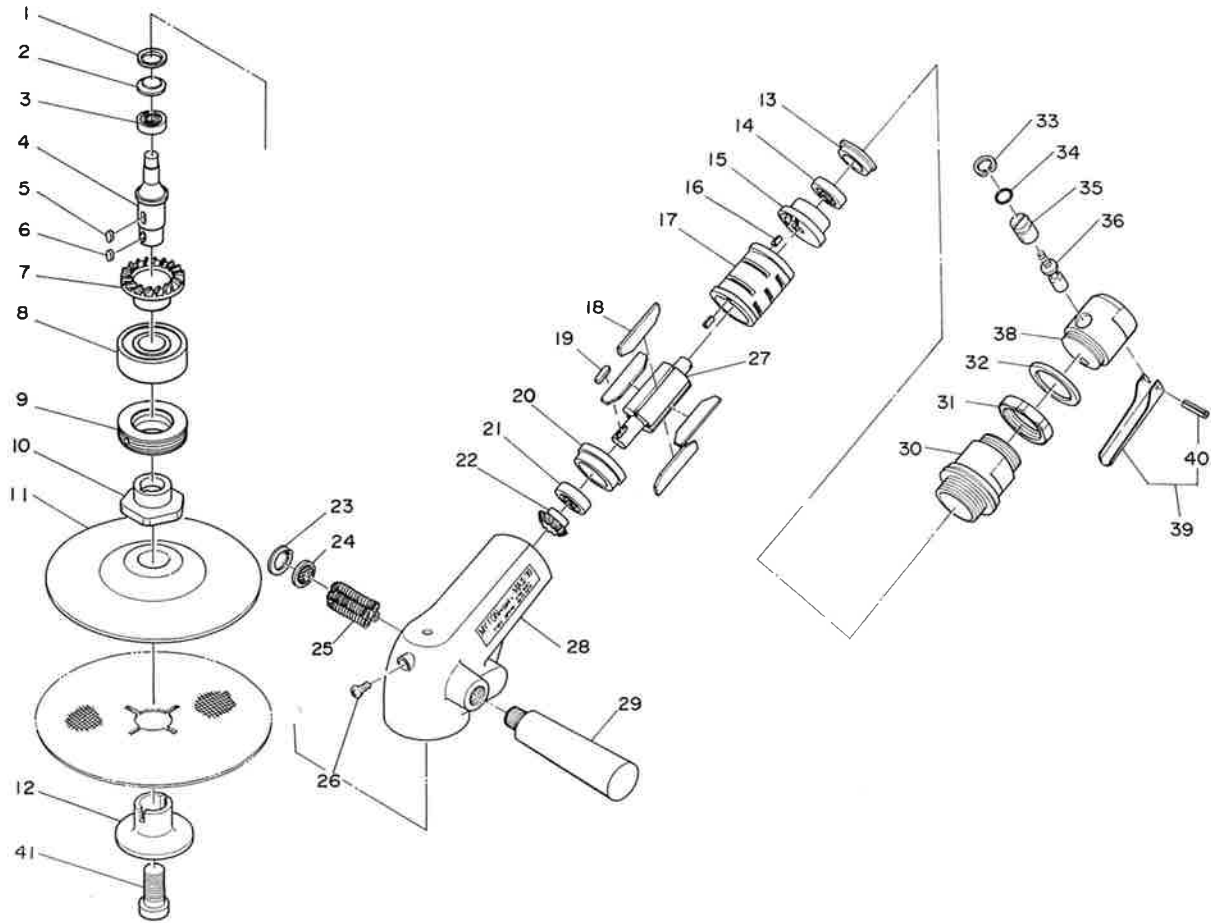
3-1. AIR PRESSURE

Air pressure largely determines tool performance. Myton is designed to be operated at a gauge pressure of 5~6.5 Kg/cm² (70~92 psig). A lower pressure range reduces performance.

⚠ WARNING

If this tool is operated at higher pressure than the rated one, it will rotate excessively fast and the wheel may break off causing injury and parts may break down

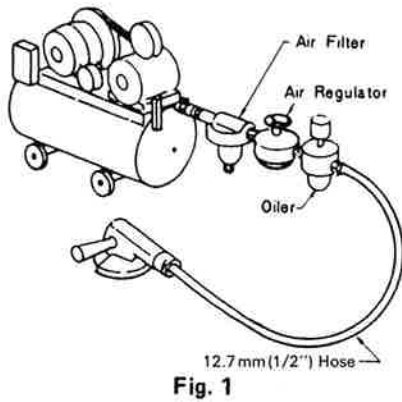
7. Myton (MAS-70) Assembly and Parts List



No.	Parts No.	Parts Name	Q'ty	Price
1	TP11687	Packing	1	
2	TP11685	Bearing Cover	1	
3	TP00468	Ball Bearing 608ZZ	1	
4	TP11708	Spindle	1	
5	TP00502	Sunk Key 4 x 4 x 9.5	1	
6	TP09933	Sunk Key 4 x 4 x 12	1	
7	TP11788	Gear	1	
8	TP11707	Ball Bearing 6304ZZ	1	
9	TA97016	Bearing Set Screw Ass'y	1 set	
10	TP11686	Lock Plate	1	
11	TP03856	7" Sanding Disk Pat	1	
12	TQ00383	Disk Lock	1	
13	TP11787	Cap	1	
14	TP06242	Ball Bearing 629ZZ	1	
15	TP11774	End Plate A	1	
16	TP04061	Spring Pin 3 x 6	2	
17	TP11775	Cylinder	1	
18	TA9A291	Blade Ass'y (4 pcs/set)	1 set	
19	TP10130	Sunk Key 3 x 3 x 10	1	
20	TP11778	End Plate B	1	
21	TP11779	Ball Bearing 629DD	1	
22	TP11773	Pinion	1	
23	TP10127	Retaining Ring C-20	1	

No.	Parts No.	Parts Name	Q'ty	Price
24	TP01658	Filter	1	
25	TA96013	Filter Ass'y	2 sets	
26	TP06715	Cross-recessed Oval Countersunk Head Machine Screw 5 x 8	1	
27	TP11776	Rotor	1	
28	TP11772	Housing	1	
29	TA90586	Subhandle Ass'y	1 set	
30	TP17447	Adaptor	1	
31	TP17452	Lock Ring	1	
32	TP17445	O Ring S-35.5	1	
33	TP03473	Retaining Ring C-14	1	
34	TP11992	O Ring KS-9	1	
35	TP04394	Adjust Valve	1	
36	TA96334	Throttle Valve Ass'y	1 set	
38	TP04393	Valve Body	1	
39	TA96253	Throttle Lever Ass'y	1 set	
40	TP01921	Spring Pin 3 x 18	1	
41	TP11688	Hexagon Socket Head Bolt 12 x 25	1	
	TP00864	Reducer M16 x NPT 3/8	1	
	TP01355	Hose Nipple NPT 3/8 x 3/8	1	
	TP11723	Hexagon Wrench Key 10	1	
	TP11724	Single Ended Spanner 41	1	

3-2. AIR LINE (Fig. 1)



Use a 1/2" air hose between the compressor and the tool. Compressed air is cooled and its water content separated, as soon as the air leaves the compressor. A portion of the water content, however, is condensed in the piping, and can enter the tool mechanism, and may cause trouble. So, install an air filter and an oiler between the compressor and the tool.

3-3. AIR HOSE

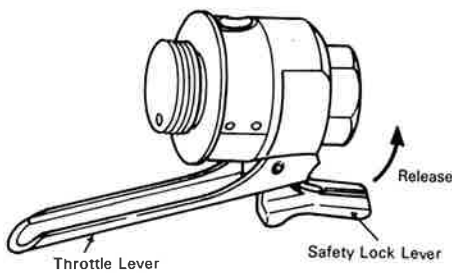
Blow compressed air through the supply hose before connecting the tool.

3-4. LUBRICATION

Before connecting the hose apply 4 or 5 drops of # 10 machine oil at the air inlet. (No lubrication is required when oiler is used) Use of a thicker oil can lead to reduced performance or malfunction, If a thicker oil is used by accident, wash it away immediately. Also, every 1 or 2 hours of operation oiling is necessary.

3-5. DOUBLE LOCK SAFETY LEVER (For MAG-70 only) (Fig. 2)

Before gripping the throttle lever, release the safety lock lever mounted on the rear of throttle lever to unlock the safety lock.



4. Depressed Center Wheel or Sanding Disc

4-1. DEPRESSED CENTER WHEEL FOR MAG-70

⚠ WARNING

Before mounting a new depressed center wheel on MAG-70, check it carefully for cracks. A cracked depressed center wheel can cause serious injury if it breaks and flies off.

When starting the tool (with a new or replacement wheel installed) hold the tool in a well protected area and let run for one minute.

For maximum performance, use the edge of the depressed center wheel or sanding disc in operations. Replacement of a depressed center wheel is necessary when the diameter is worn to 120mm. Refer to the table below when ordering a new depressed center wheel for MAG-70

Grinding object	Grain	Bonding agent	Bonding degree	Grain	
Ordinary steel Cast iron	A	B	The degree of bonding is indicated by alphabet. Use a soft grinding wheel for soft materials and hard one for hard materials. And soft wheel for smooth surface materials and a hard one for rough surface materials.	A-G very soft	
Special steel Stainless steel High speed steel Alloy steel	WA	B		H-K soft	Use #12 ~ #13 rough grinding particles for deburring cracks chamfering and rust removal. #80 #60 for intermediate finishing and #80 #120 for fine finishing.
Stone rubber porcelain nonferrous metal wood	C	B		L-O medium	
Super hard alloy	GC	B		P-S hard	
				T-Z very hard	

4-2. SANDING DISC FOR MAS-70

Use 180mm (7") diameter sanding discs with 22mm arbor hole for MAS-70.

⚠ WARNING

Do not use MAS-70 with a depressed center wheel

SAVE THESE INSTRUCTIONS

5. Storage

Avoid storing the tool in a high humid location. If the tool is left as it is used, residual moisture on the inside can cause rusting. Before storing and after operation oil the tool at the hose coupling opening with spindle oil and run it for a short time.

⚠ WARNING

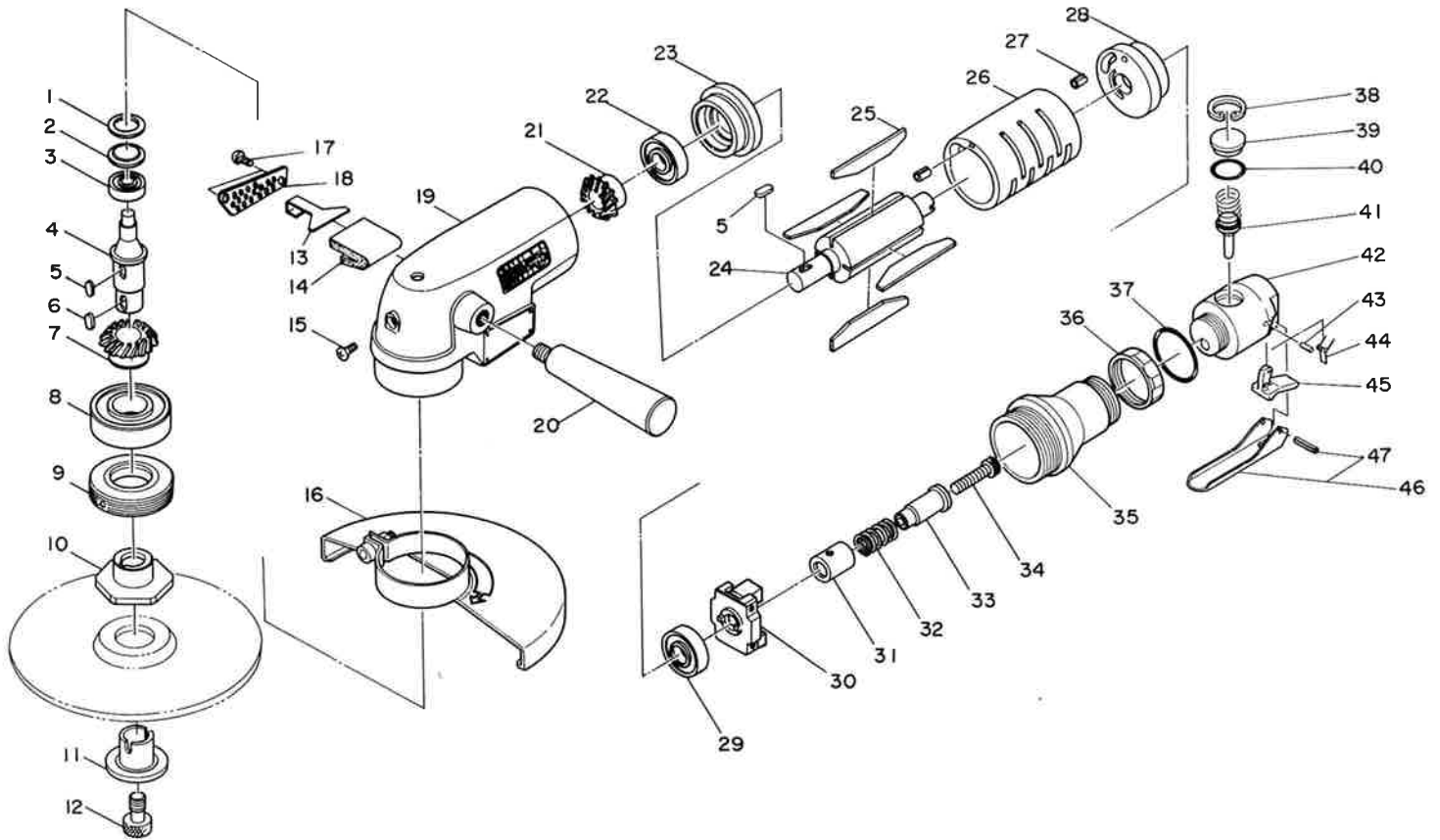
Keep this tool out of reach of children.

6. Ordering Service Parts

- ★ For further operational and handling information or for replacement of parts and components, contact the sale agent from whom you purchased the tool or the service division of our company.
- ★ In ordering parts and components, give each part number, name and part quantity.



8. Myton (MAG-70) Assembly and Parts List



No.	Parts No.	Parts Name	Q'ty	Price
1	TP11687	Packing	1	
2	TP11685	Bearing Cover	1	
3	TP00468	Ball Bearing 608zz	1	
4	TP11708	Spindle	1	
5	TP00502	Sunk Key 4 x 4 x 9.5	2	
6	TP09933	Sunk Key 4 x 4 x 12	1	
7	TP11709	Gear	1	
8	TP11707	Ball Bearing 6304zz	1	
9	TA97016	Bearing Set Screw Ass'y	1 set	
10	TQ00772	Lock Plate	1	
11	TQ00771	Disc Lock	1	
12	TP11688	Hexagon Socket Head Bolt 12 x 25	1	
13	TP12260	Filter Support	1	
14	TP12261	Filter	1	
15	TP06715	Cross-recessed Oval Countersunk Head Machine Screw 5 x 8	1	
16	TB00555	Wheel Guard Ass'y	1 set	
17	TP02618	Cross-recessed Pan Head Machine Screw 4 x 8	2	
18	TP11691	Exhaust Cover	1	
19	TB00607	Housing Sub Ass'y	1 set	
20	TA90586	Subhandle Ass'y	1	
21	TP11694	Pinion	1	
22	TP11701	Ball Bearing 6201DD	1	
23	TP11700	End Plate B	1	
24	TP11697	Rotor	1	
25	TA9A292	Blade Ass'y (4 pcs/set)	1 set	

No.	Parts No.	Parts Name	Q'ty	Price
26	TP11699	Cylinder	1	
27	TP04061	Spring Pin 3 x 6	2	
28	TP11696	End Plate A	1	
29	TP11695	Ball Bearing 6201zz	1	
30	TA97298	Base Ass'y	1 set	
31	TP11705	Sleeve	1	
32	TP11706	Spring 1.8 x 13.7 x 24	1	
33	TP11704	Sleeve Guide	1	
34	TP05648	Hexagon Socket Head Bolt 5 x 45	1	
35	TA9A765	Valve Holder Sub Ass'y	1 set	
36	TP17452	Lock Ring	1	
37	TP17445	O Ring S-35.5	1	
38	TP10448	Retaining Ring C-24	1	
39	TP10444	Valve Cap	1	
40	TP10714	O Ring S-22	1	
41	TA96331	Valve Stem Ass'y	1 set	
42	TP16235	Valve Body	1	
43	TP09434	Spring Pin 2 x 12	1	
44	TP14340	Torsion Coil Spring	1	
45	TP14339	Lock Lever	1	
46	TA96253	Throttle Lever Ass'y	1 set	
47	TP01921	Spring Pin 3 x 18	1	
	TP00170	Hexagon Wrench Key 6	1	
	TP03734	Reducer M22 x NPT 1/2	1	
	TP03736	Hose Nipple NPT 1/2 x 1/2	1	
	TP11723	Hexagon Wrench Key 10	1	
	TP11724	Single Ended Spanner 41	1	

* When ordering parts, never give symbol number, but parts number. Symbol number is attached only for pursuing the parts number.

