

ATRA ACE Manual feed Model WO-3250



Common Place Applications

On-site hole cutting in steel plates, H-Beams, shaped bars, framework, shipbuilding, bridge construction and repair, steel reinforcements, and many other metal working and construction jobs.

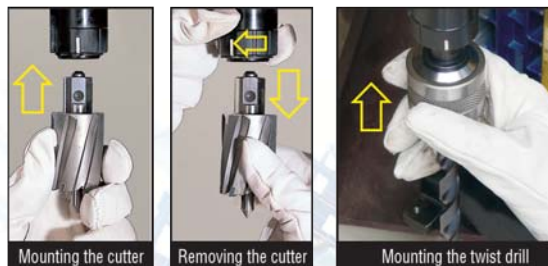
Designed to use High Speed Steel Annular Cutters

Fresh compact design with advanced safety system answers the customer's needs.

From the extremely efficient electro-magnet to the height adjustable frame with reversible feed handles, the new ATRA adapts to more user needs while offering safety where it's needed most. Original Hi-Broach cutters drastically shorten drilling time when compared to similar sized conventional twist drills. Optional One-Touch twist drill adapter allows the use of up to 13mm twist drills to be inserted allows up to 13mm holes.

One-touch cutter replacement

Our original self-centering tool-less chuck is quick and easy to change cutters with little downtime.



Manual Magnetic Base Drill incorporates the latest technology in user safety.

Newly developed Over-Load shutdown, magnet open-circuit sensor, and Fail-Safe Restart technology formerly only found on high-end Nitto Kohki Automatics are incorporated on the machine to further increase drill output while keeping costs and safety concerns down.

Over-Load Shutdown

When excessive load is detected during the drilling process, the drill motor will automatically shutdown protecting itself from damage. Once overloaded, the motor "Start" switch is required to be depressed to resume drilling.

Fail-Safe Restart

In the event of a power loss while drilling, the drill will not restart even after power is resupplied. The motor "Start" switch is required to be depressed to resume drilling.

Magnet Open-Circuit Sensor

The drill will not start if the magnet fails to energize due to an open field or faulty wire.

Reversible Feed Handles

Feed handles can be positioned on the right or left hand side for ease of drilling and mounting in confined spaces.



Optional One-Touch Adapter

Optional one-touch adapter allows the use of up to 13mm twist drills to be used in the original arbor.



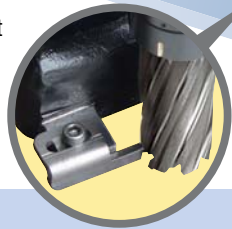
Optional Jet Oiling System

Optional jet oiling system for use with all drilling applications and types of cutters to extend cutter life and increase hole output.



Optional Chip Breaker

Optional chip breaker helps prevent the cutter from plugging the hole with chip debris, causing some false overloads and cutter life loss.



Body Height Adjustment

Loosening the pillar clamp allows the complete frame to be lifted up to a maximum of 60mm for specific drilling. The use of Hi-Broach cutters require the frame to be at the lowest position, while twist bit drilling required the appropriate amount of elevation to be adjusted for safe operation. The pillar clamp is required to be tightened before safe drilling may take place.

Note: Always engage the magnet before adjusting the body height.



Specifications

Model		WO-3250		
Power Source (Single Phase)		220~240 V AC 50/60Hz		
Electric Drill	Rated Power Consumption	W	950	
	Rated Current	A	4.3	
	No Load Speed	min ⁻¹ (rpm)	530	
Magnet Power Consumption		W	70	
Hole-cutting Capacity		Cutter	Hole Diameter	Plate Thickness
One-touch type HI-BROACH			12 to 32 mm	9 to 50 mm
Magnet Holding Power		N (kgf)	9,000	
Magnet Dimensions		mm	99 x 177	
Mass (Weight)		kg	13	
Standard Accessories		<ul style="list-style-type: none"> • Guard Ass'y : 1 set • Pilot Pin 08050 : 1 pc. • 3 mm Hex Socket Screw Key : 1 pc. • 8 x 10 mm Spanner : 1 pc. • Side Handle Ass'y : 1 set • Safety Strap : 1 pc. 		