



MODEL KW-2500pro

IMPACT WRENCH

3/4" SQ. DRIVE HEAVY-DUTY



LIGHT WEIGHT 4.2 kg

Original "N-type" Impact Mechanism

"with an innovative no-hammer clutch system newly developed by KUKEN."



LOWEST EXHAUST NOISE 86 dB (A)

FEATURES:

- Excellent power, compactness and light-weight with minimum vibration.
Most logical mechanism for incredible power to weight ratio among impact wrenches ever produced in the world.
- Accurate thread fastening works with patented N-clutch impact mechanism.
No loss of lubricant in the clutch facilitates this operation.
- Increased durability achieved by excellent clutches and less damage to bolts and nuts by "Shift-on" action.
- Handle exhaust for low noise level and operator's convenience.
- Minimum air consumption.

APPLICATIONS:

- Industrial use:
Machineries, Bridge and building constructions, ship building, heavy duty industrial engine, etc.
- Automotive Service:
Truck wheel nuts, U-Bolts, General fleet maintenance, spring repair works, etc.

SPECIFICATIONS: (Performance figures are at 0.62 MPa (Pe) (90 P.S.I.) air pressure.)

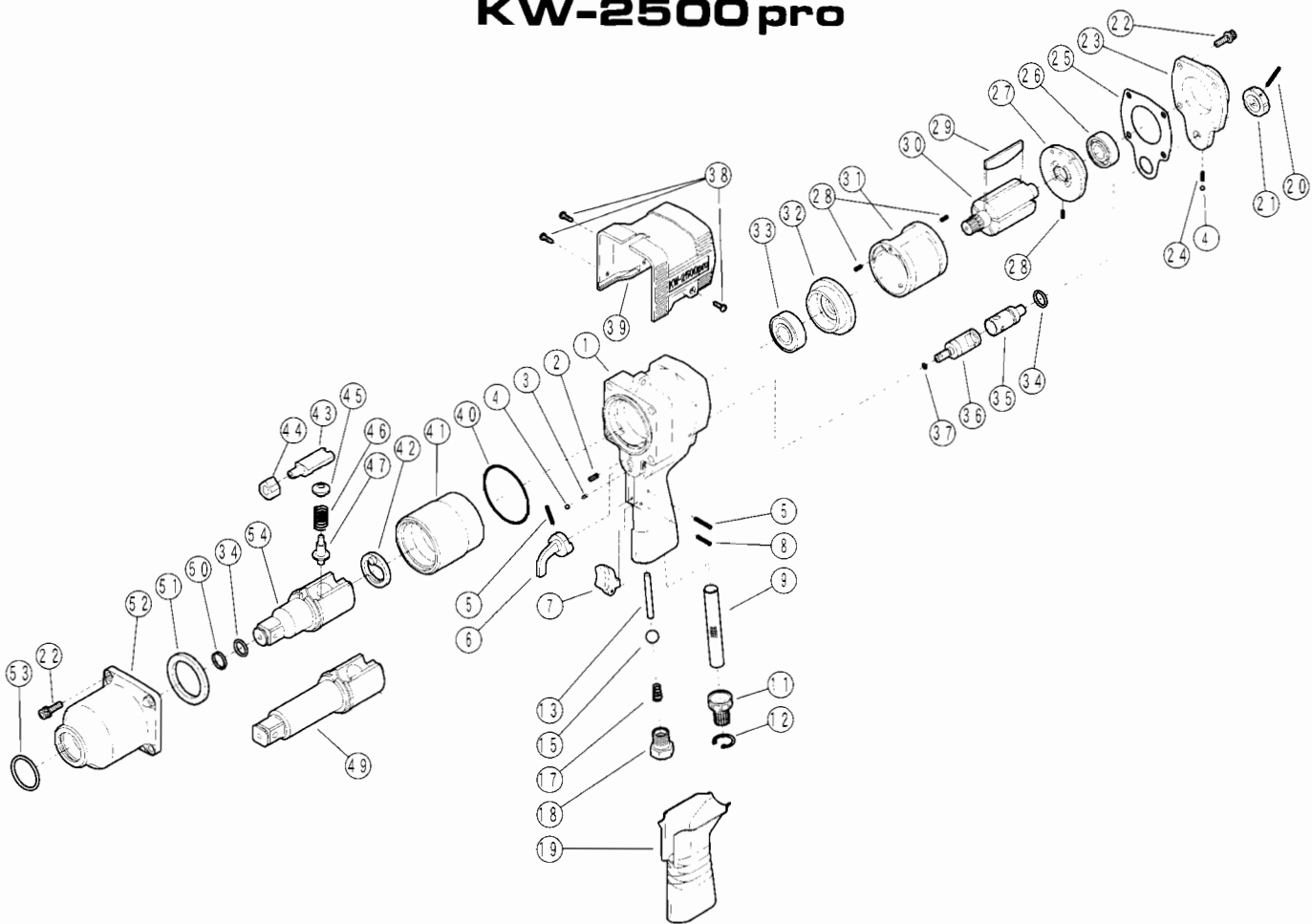
Capacity Bolt Size	25 mm	1"
Impacts Per Min.	900	
Speed R.P.M.	4,500	
Recommended Torque	200~980 Nm	144~725 ft.-lb.
Length	219 mm	8 2/3"
Weight	4.2 kg	9.2 lbs.
Air Consumption	0.45 m ³ /min	16.0 c.f.m.
Hose Size Recommended	9.5 mm	3/8"
Air Inlet Thread Size	1/4"	

*IMPORTANT: P.T. or N.P.T. for your choice.

*This tool does not require high air pressure to achieve its maximum torque. Continuous operation at pressure higher than 0.62 MPa (Pe) (90 P.S.I.) may cause component failure and shorter tool life.

EXPLODED VIEW

KW-2500 pro



PARTS LIST

REF. NO. on DRAW.	PART NUMBER	PART NAME	Q'TY.	REF. NO. on DRAW.	PART NUMBER	PART NAME	Q'TY.
1	0525081B1	Motor case C.P.	1	28	Z0563x8	Pin	3
2	Z0564x8	Pin	1	29	0525022B	Rotor Blade	5
3	0114194	Knock Spring	1	30	0525021B	Rotor	1
4	Z0104D	Steel Ball	2	31	0120115	Cylinder	1
5	Z0563x22	Pin	2	32	0525023	Front End Plate	1
6	0525016B	Reverse Lever	1	33	Z0016203Z	Ball Bearing	1
7	0525012B	Throttle Lever	1	34	Z040P14	"O" Ring	2
8	Z0563x18	Pin	1	35	0525017B	Regulating Valve	1
9	05250401BA	Noise Suppressor	1	36	0528015	Reverse Valve	1
				37	Z041S6	"O" Ring	1
11	0525040B	Muffler	1	38	Z0804x12	Tapping Screw	3
12	Z03124	Retainer Ring	1	39	05250041B	Protector	1
13	0525013	Throttle Valve Pin	1	40	Z041S63	"O" Ring	1
				41	0525026	Hammer Wheel	1
15	Z0111/2D	Throttle Valve	1	42	0525050	Retainer	1
				43	0525028	Anvil Piece	1
17	0108938	Throttle Spring	1	44	0525027	Cam	1
18	0516011A	Inlet Bushing	1	45	0525052B	Plunger B	1
19	05250011B	Grip	1	46	0525053	Spring	1
20	Z0563x28	Pin	1	47	0525051B	Plunger A	1
21	0438318	Regulating Valve Knob	1	48	05250843AH	Anvil C.P.	1
22	Z0666x20A	Bolt	8	49	05250845A	3" Anvil C.P.	1
23	0525088B	Case Cover C.P.	1	50	0120128	Retainer Ring	1
24	0114192	Knock Spring	1	51	0525029	Bushing	1
25	0525006B	Motor Housing Gasket	1	52	0525082B	Impact Housing C.P.	1
26	Z0016202	Ball Bearing	1	53	Z040P32	"O" Ring	1
27	0120113	Rear End Plate	1				

KUKEN CO., LTD.

P.O. BOX 20, FUJIIERA OSAKA 583-0871 JAPAN
 3-6-15, NONOUE, HABIKINO-SHI, OSAKA JAPAN
 TEL: 81-72-953-0601
 FAX: 81-72-953-0605
 http://www.kuken.co.jp