



MODEL **KW-2800P & P1**

# IMPACT WRENCH

1" or 3/4" Sq. DRIVE HEAVY-DUTY



**KW-2800P1**



**KW-2800P**

## Original "N-type" Impact Wrench

"with an innovative no-hammer clutch system newly developed by KUKEN."

**Do not operate with air pressure about 6.3 kg/cm<sup>2</sup> !**

### FEATURES:

- Excellent power, compactness and light-weight with minimum vibration.
- Most logical mechanism for incredible power to weight ratio among impact wrenches ever produced in the world.
- Accurate thread fastening works with patented N-clutch impact mechanism.  
No loss of lubricant in the clutch facilitates this operation.
- Increased durability achieved by excellent clutches and less damage to bolts and nuts by "Shift-on" action.
- Rear exhaust for low noise level and operator's convenience.
- Minimum air consumption.
- Available anvil 1" or 3/4" sq.

### APPLICATIONS:

- Industrial use:  
Machineries, bridge and building constructions, shipyard, heavy industrial engine and etc.
- Heavy-duty automotive service:  
Truck wheel nuts, U-bolts, general fleet maintenance, spring repair works and etc.

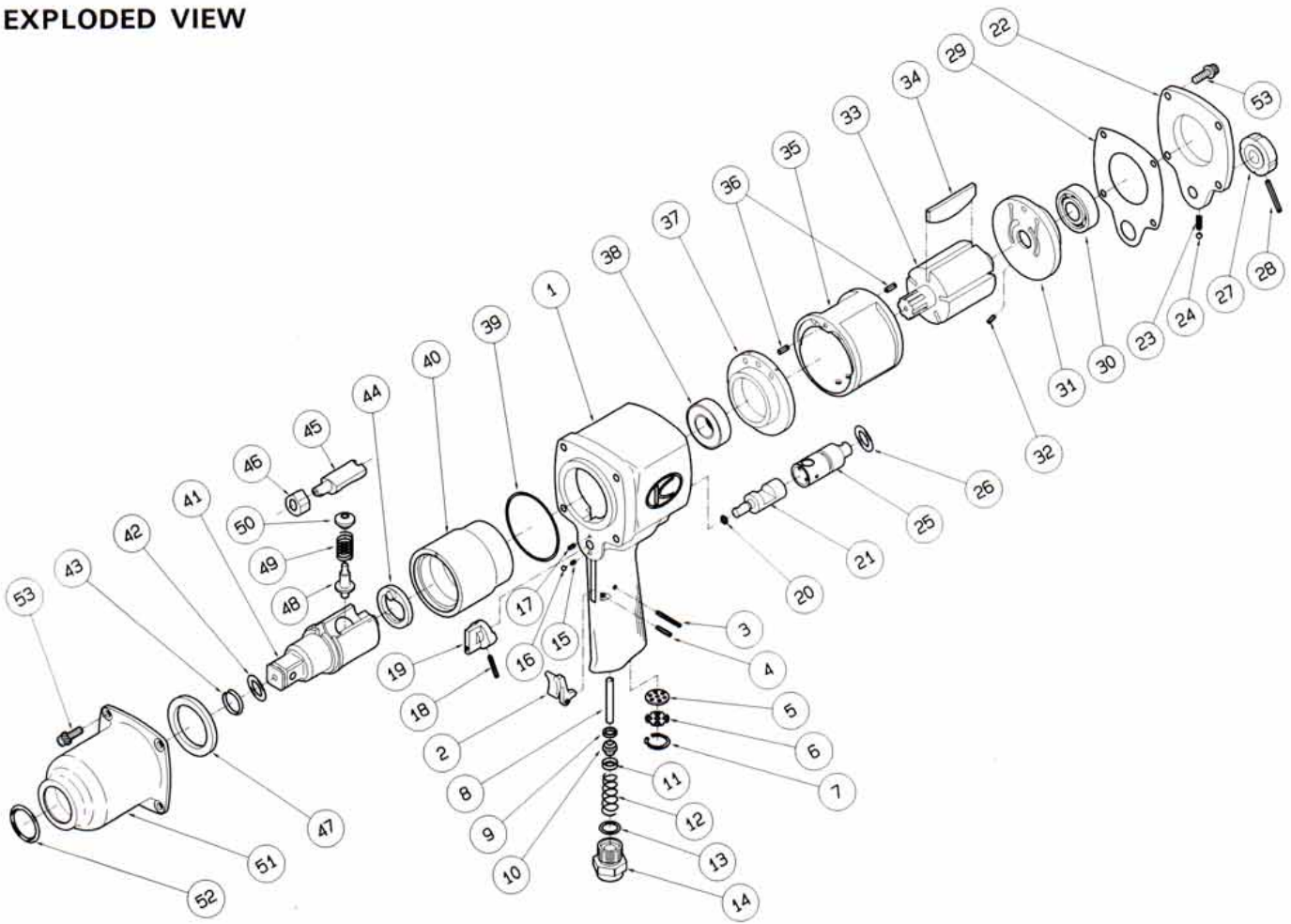
### SPECIFICATIONS: (Performance figures are at 6.3 kg/cm<sup>2</sup> (90 p.s.i.) air pressure.)

Capacity bolt size	35 mm	8 11/32"
Blows per min.	800	
Speed r.p.m.	3,000	
Length	226 mm	8 7/8"
Weight 1" sq.	5.4 kg	11.9 lbs
3/4"	5.3 kg	11.7 lbs
Ave. air consumption	220 l/min	
Hose size recommended	9.5 mm	3/8"
Air inlet thread size	1/4*	

\* IMPORTANT: B.P.T. or N.P.T. for your choice.

\* This tool does not require high air pressure to achieve its maximum torque continuous operation at pressure higher than 6.3 kg/cm<sup>2</sup> may cause component failure and shorter tool life.

# EXPLODED VIEW



## PARTS LIST

REF. NO. on DRAW.	PART NUMBER	PART NAME	Q'TY.	REF. NO. on DRAW.	PART NUMBER	PART NAME	Q'TY.
1	0528081	Motor Case C.P.	1	29	0528006	Motor Gasket	1
2	0714P12	Throttle Lever	1	30	Z0016203	Ball Bearing	1
3	Z0563 x 28	Spring Pin	1	31	0528024	Rear End Plate	1
4	Z0563 x 16	Spring Pin	1	32	Z0563 x 8	Spring Pin	1
5	0423061A	Muffer	1	33	0528021	Rotor	1
6	0423062	Stopper	1	34	0528022	Rotor Blade	5
7	Z03020	Retainer Ring	1	35	0120304	Cylinder	1
8	0525013	Throttle Valve Pin	1	36	Z0564 x 10	Spring Pin	2
9	05250111	Throttle Valve Plate	1	37	0528023	Front End Plate	1
10	0525011	Throttle Valve	1	38	Z0016004Z	Ball Bearing	1
11	0535041	"O" Ring Cover	1	39	Z041S65	"O" Ring	1
12	0528038	Throttle Spring	1	40	0528026	Hammer Wheel	1
13	Z040P18	"O" Ring	1	41	0528030AIM	3/4" Anvil	1
14	0423011	Inlet Bushing	1	41	05280301AIM	1" Anvil	1
15	0114194	Spring	1	41	05280843	Anvil C.P. (3/4" Ring Type)	1
16	Z0104D	Steel Ball	1	41	05280844	3" Anvil C.P. (3/4" Ring Type)	1
17	Z0563 x 6	Spring Pin	1	42	Z040P14	"O" Ring	1
18	Z0563 x 22	Spring Pin	1	43	0120128	Retainer Ring	1
19	0528016	Reversing Lever	1	44	0528050	Retainer	1
20	Z041S6	"O" Ring	1	45	0525028	Anvil Piece	1
21	0528015	Reversing Valve	1	46	0525027	Cam	1
22	0528088	Case Cover C.P.	1	47	0525029	Bushing	1
23	0114192	Spring Pin	1	48	0525051B	Plunger A	1
24	Z0104D	Steel Ball	1	49	0525053	Spring	1
25	0528017	Regulating Valve	1	50	0525052B	Plunger B	1
26	Z040P14	"O" Ring	1	51	0528082	Impact Housing C.P.	1
27	0438318	Regulating Valve Knob	1	52	Z040P34	"O" Ring	1
28	Z0563 x 28	Spring Pin	1	53	Z0666 x 18A	Bolt	8

# KUKEN CO., LTD.

P.O. BOX 20, FUJIIDERA OSAKA 583 JAPAN  
 3-6-15, NONOUE, HABIKINO-SHI, OSAKA JAPAN  
 PHONES, HANNAN: (0729) 53-0601  
 FAX: (0729) 53-0605