

SPECIFICATIONS (Performance figures are at 0.02 MPa(Fe) (90 P.S.I) air pressure)

Model : KW-3800PRO-G, KW-3800PRO-GL

Description : 1" SQ. DR. PNEUMATIC IMPACT WRENCH

Noise Level	86.5 dB(A)
--------------------	-------------------

Test Method : Tested in accordance with test method from European Standard EN792(ISO3744).

Vibration Level	> 2.5 m/s²
------------------------	---------------------------------

Test Method : Tested in accordance with test requirement of ISO Standard 28927-2.

Net Weight (KW-3800PRO-G)	6.4 kg.	14.1 lbs.
Net Weight (KW-3800PRO-GL)	6.9 kg.	15.2 lbs.
Length of Product (KW-3800PRO-G)	358 mm	14-1/8 in.
Length of Product (KW-3800PRO-GL)	488 mm	19-1/4 in.
Size of Anvil	25.4 mm	1 in.
Capacity of Bolt Size	38 mm	1-1/2 in.
Air Consumption	0.60 m³/min	21.4 c.f.m.
Recommended Torque Use	300 - 1,370 Nm	216 - 991 ft-lb
Free Speed	4,200 r.p.m.	
Impact Per Minute	800 i.p.m.	
Size of Inlet Bushing	3/8 in.	

ISSUED BY :  KUKEN CO., LTD.

ADDRESS : 3-6-15 NONOUE, HABIKINO-SHI, OSAKA 583-0871 JAPAN

TEL : + 81 - 72 - 953 - 3346

FAX : + 81 - 72 - 953 - 0605

WEB-SITE : <http://www.kuken.co.jp/english/>

E-MAIL : export1@kuken.co.jp



KW-3800PRO-G



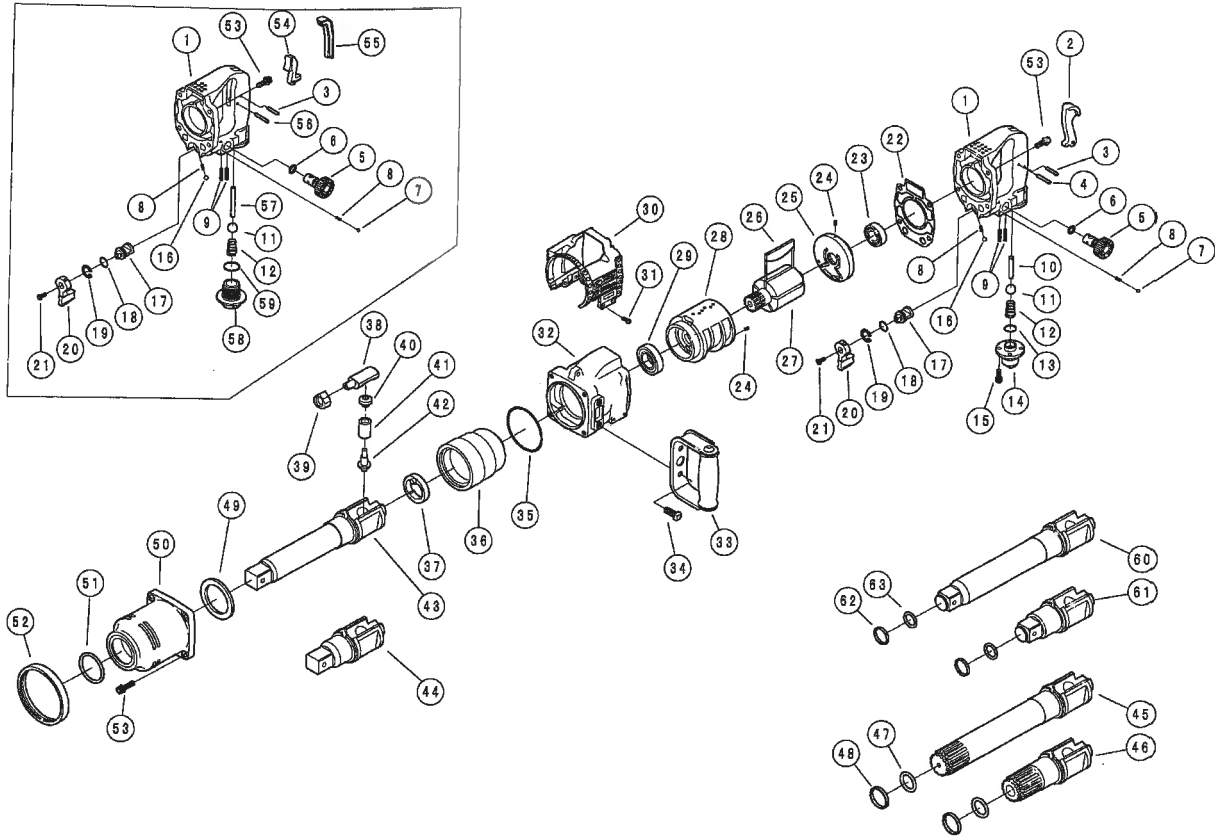
KW-3800PRO-GL

AUGUST 2, 2011
DATE ISSUED


MANAGING DIRECTOR

KW-3800PRO-G & 3800PRO-GL

EXPLODED VIEW



REF. NO.	PART NO.	PART NAME	Q'TY	REF. NO.	PART NO.	PART NAME	Q'TY
1	0538180B	HANDLE C.P.(OUTSIDE TRIGGER)	1	35	Z041S75	O-RING	1
2	0222117	THROTTLE LEVER	1	36	0538026B	HAMMER WHEEL	1
3	Z0614X22	PIN	1	37	0538050B	RETAINER	1
4	Z0614X24	PIN	1	38	0538028B	ANVIL PIECE	1
5	0538117B	REGULATING VALVE	1	39	0538027A	CAM	1
6	Z040P10A	O-RING	1	40	0538052B	PLUNGER B	1
7	Z0104D	STEEL BALL	1	41	0538053C	SPRING	1
8	0114193	KNOCK SPRING	2	42	0538051B	PLUNGER A	1
9	Z0564X18	PIN	2	43	0538130B	ANVIL GL	1
10	0538113B	THROTTLE VALVE PIN	1	44	0538030A	SQ.DR.QNVIL (G)	1
11	Z0119/16D	THROTTLE VALVE	1	45	05382841B	ANVIL GLS C.P.	1
12	0222190	THROTTLE SPRING	1	46	05383841A	ANVIL GS C.P.	1
13	Z041S18	O-RING	1	47	Z040P26	O-RING	1
14	0538111B	INLET BUSHING	1	48	0132202	RETAINER RING	1
15	Z0665X16A	BOLT	4	49	0538029	BUSHING	1
16	Z0106D	STEEL BALL	1	50	0538182B	IMPACT HOUSING C.P.	1
17	0538115B	REVERSE VALVE	1	51	Z040P42	O-RING	1
18	Z041S16	O-RING	1	52	0538104B	FRONT RUBBER PROTECTOR	1
19	Z03119	RETAINER-RING	1	53	Z0666X22A	BOLT	4
20	0538116B	REVERSE LEVER	1	60	Z0666X25A	BOLT	4
21	Z0674X12	SCREW	1	71	05381844	Anvil GL with Socket Retainer	1
22	0538106B	MOTOR HOUSING GASKET	1	72	05380844	Anvil G with Socket Retainer	1
23	Z0016203	BALL BERING	1	73	Z04318030	O-RING	1
24	Z0563X6	PIN	2	74	0538034A	RETAINER RING	1
25	0538124B2	REAR END PLATE	1	Parts For Inside Trigger Handle			
26	0538022	ROTOR BLADE	5	1	0538180BI	HANDLE C.P. (INSIDE TRIGGER)	1
27	0538121B	ROTOR	1	(1)	0538180BIN	HANDLE C.P. (INSIDE / NPT)	1
28	0538120B	CYLINDER	1	54	0538112AIAIM	THROTTLE LEVER (IN)	1
29	Z0016205ZZ	BALL BERING	1	55	05381124AIM	COVER	1
30	05381041B	PROTECTOR	1	56	Z0614X20	PIN	1
31	Z0804X10	TAPPING SCREW	4	57	0538113BI	THROTTLE VALVE PIN (IN)	1
32	0538181B	MOTOR CASE C.P.	1	58	05381114BI	INLET BUSHING (IN)	1
33	0538187B	DEAD HANDLE C.P.	1	(58)	05381114BIN	INLET BUSHING (NPT)	1
34	Z0688X16A	BOLT	2	59	Z040P24	O-RING	1

SPECIFICATIONS (Performance figures are at 0.62 MPa(Pa) (90 P.S.I) air pressure)



SAFETY GUIDELINES PNEUMATIC(AIR) TOOLS IN GENERAL

Thank you very much for purchasing "KUKEN" products.
Please read this manual thoroughly before use and fully understand the content to use pneumatic tools safely.



Warning : Read this manual after fully understanding following items.

- Following headlines are provided for safety cautions. All of them are important for your safety. Make sure to follow the information.



Warning : Indicates extreme situations that the user may die or get severe injury if mishandled.



Caution : Indicates hazardous situations that the user may be damaged or materials may be damaged if mishandled.

※ Even the content of "Caution" may cause the serious result depending on conditions.

- This manual should be retained in the place within close reach for repetitive reference.
- When you lost or mutilated the warning indication label attached on this manual or product, ask us or the purchased shop for backorder and keep it or attach it on the manual or product properly.
- When you transfer or lease this product, make sure to attach this manual to it.

Contact us or the purchased shop for questions on the purchased product or on the content of this manual.

Purpose of use

CUTTING, DRILLING, SANDING, POLISHING, GRINDING, CHAMFERING, REMOVING OF PAINT & RUST, DEBURRING OF WELDING, AND FASTENING/LOOSENING

Do not disregard!

- Installation of pneumatic tools is as follows.



Warning

● **Use pneumatic tools under the appropriate air pressure. Limit inlet air pressure to 0.62 MPa(Pe) / 90 P.S.I.**
Make sure to install the pressure gauge and regulator or others to use pneumatic tools under the appropriate air pressure. Excessive air pressure may cause injury or death and may lead to wear or failure of tools and materials.

● **Do not use other power sources than that of air compressor.**

Power source of the pneumatic tool is the compressed air generated from the air compressor. Use of other high-pressure gases (oxygen, acetylene gas, propane gas, etc.) than compressor air causes a risk of explosion.

● **Use a proper air hose.**

Use the air hose of oil-resistant and that the external surface of which is wear-resistant, and that complied with the working air pressure for the specified or larger internal diameter. Do not use the aging and extremely long hose.

● **Securely mount air hose fittings.**

When the air hose comes off due to improper mounting, it bounces around by air injection and is very dangerous. Make sure to mount air hose fittings on the air hose and the pneumatic tool.

● **Supply clean and dry compressed air.**

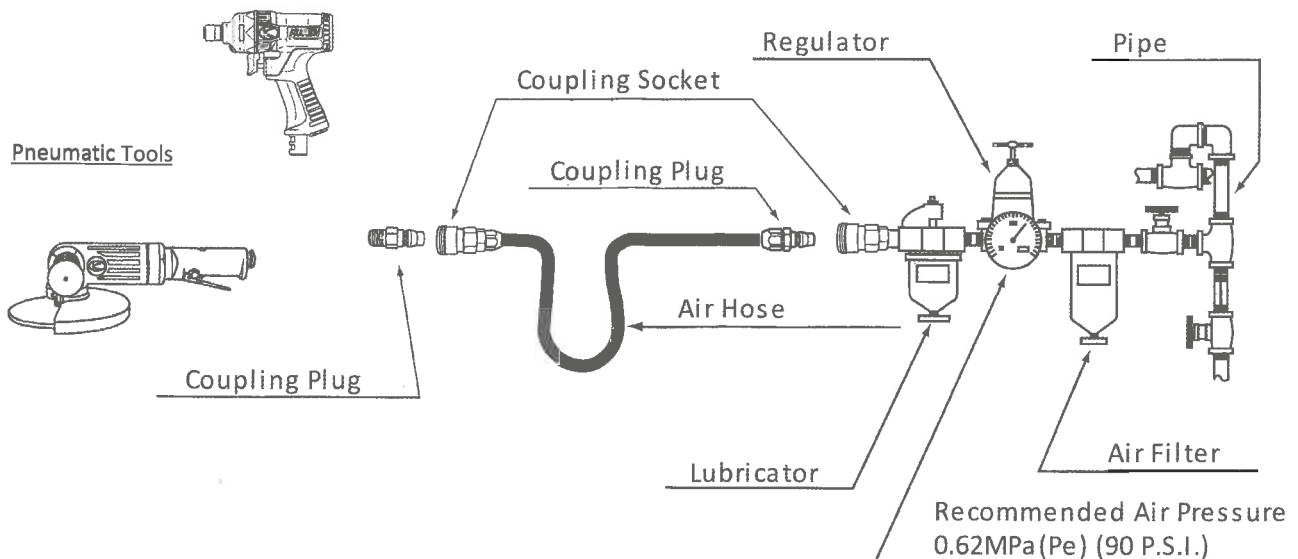
Supply clean and dry compressed air since refuse and drain water is a cause of accidents and failure. We recommend installing the air dryer and filter.

● **Lubrication is important.**

Lack of lubrication is a cause of not only failure but also accidents due to occurrence of rust and wear.

Supply the air motor with one or two drops of machine oil ISOVG-10 once a day through the air inlet.

Do not supply too much oil in order to avoid the leaking of the clutch grease. The use of lubricators and air filter regulators are suggested.



■ Operation environment is as follows.



Warning

- **Keep the work place sufficiently bright and clean at all times.**

Dark and disorganized work place may cause accidents. Pay attention to lightings and keep the work place clean and organized.

- **Do not use the pneumatic tool in the place where there is risk of explosion.**

Do not use the pneumatic tool in any case in the place where there is a risk of ignition and explosion. It is dangerous.

- **Keep away from electricity.**

Pneumatic tools are not insulated. Keep away from the electricity to protect users/operators from electrical shock.

- **Keep work area well ventilated.**

Some dust and fumes created by sanding, grinding, drilling, and other construction activities contain chemicals which affects your health. To reduce your exposure to chemicals, keep the work area well ventilated and wear masks.

■ Clothes at work is as follows.



Warning

- **Use in proper clothes.**

Do not wear baggy clothes and accessories like a necklace. Wear in proper clothes for use. Cover your long hair with a cap or others so as not to fall over the air tool.

- **Use the protective equipment.**

Use the work protective equipment such as helmets, protective glasses, earplugs, safety shoes, etc. depending on the content of work for human protection.

User of pneumatic tools is responsible to follow regional safety regulations.

- **Wear gloves.**

Operating air tools for long time hours may cause the physical illness from the vibration.



■ Before use



Warning

- **Be careful for contamination of dusts when connecting the air hose.**

Make sure to flow air through the air hose until dusts and drain water are discharged when connecting the air hose with this equipment.

- **Inspect accessories and attachments for damage or defects before installation on tools.**

Using damaged or defective accessories may fail or detach and may cause injury or death.

- **Inspect the pneumatic tool visually before use.**

Do not use the tool if it appears damaged. Damaged tools may cause death or severe injury

- **Make sure to contact a dealer when you have questions on handling.**

Make sure to contact us before connecting this equipment with the air hose when you have any questions on safety and proper manipulation of this equipment, grinding tool, accessories (sockets, couplings, etc.), and peripherals.

- **Pay attention to the laws and regulations on noise.**

You must use the product with the regulated value and below so as not to disturb surroundings. Install the sound insulation wall as necessary.

- **Be fully careful for working at a high place.**

Ensure the safety of scaffold to prevent falling down from a high place during work..



Caution

■ Before using sanders and polishers.



Warning

- **Regularly check spindle speed of sanders and polishers with 0.62MPa(Pe) / 90 P.S.I. at tool inlet without an accessory.**

In accordance with EN 792, the no-load speed may not exceed the rated speed by more than 10%.

- **Do not use mount a grinding wheel, cut-off wheel, saw or other accessories that require a guard sanders or polishers.**

It is very dangerous and may cause death or severe injury with certain accessories. Use only insisted accessories.

- **Do not use worn or damaged accessories.**

Using worn and damaged accessories may cause failure of components and may cause injury or death.

- **Do not use dirty or worn backup pads.**

Always check the mounting face of backup pad before attaching accessories. Make sure it is clean and unworn.

- **Make sure that the accessory is centered on the backup pads.**

Accessories mounted off the center of the backup pad may vibrate or become detached during use. It may cause death or severe injury.

- **Do not use an abrasive disc which overhangs the backup pad by more than 6mm (1/4").**

Always use correct size abrasive disc.

■ When using the pneumatic tool, follow instructions below



Warning

- **Do not activate throttle when connecting pneumatic tools to air supply.**

As tool is connected to air supply, the tool operation will begin immediately if throttle is activated.

- **Do not lock pneumatic tool in the ON position.**

Locking throttle in the ON position may cause death or severe injury as a result of not being able to turn the tool OFF.

- **Securely fix and stable a work piece.**

Insecure fixation of a work piece may cause an injury by being hit with it. Make sure to securely fix and stable before work.

- **Do not put your hand or clothes closer to the moving part.**

Do not put your hand or clothes closer to the moving part in any case. It is very dangerous during operation.

- **Take a rest as necessary.**

Take a rest as necessary since the continuous work for a long time is a cause of disease. Stop use immediately, ask a doctor consultation and follow the instruction when you feel pain or have other problems with your body.

- **Work in a improper attitude is dangerous.**

Securely hold the air tool and work in a stable position to support the sudden movement.

- **Avoid the sudden start.**

Check that the start switch is at the stop position when connecting the air hose.

Do not put your hand on the start switch when carrying the air tool.

- **Stop use immediately when you feel something is wrong.**

Stop use immediately when you feel something is wrong and ask for check and repair.

- **Do not use worn or damaged accessories.**

Using worn and damaged accessories may cause failure of components and may cause injury or death.

- **Do not operate the equipment with no load.**

Do not operate the equipment with no load since the tip tool might be removed and fall out and it is also a cause of seizure and failure such as early wear of parts.

- **Do not set a tool down while it is still in motion.**

The tool may move uncontrollably if it is still in motion. It may cause death or severe injury.

- **Make sure to check the rotation direction.**

Make sure to check the rotation direction before startup. Switching the rotation must be performed when stopped.

- **Always be prepared for unexpected reactive force.**

Securely hold the main unit to provide for reactive force absorber you might be swayed by reactive force during the operation.



Caution

■ Mounting and replacing accessories for ratchet wrenches and for impact wrenches



Warning

- **Do not use hand tool sockets, bits and/or adapters.**

Hand tool sockets, bits and/or adapters may fail and cause death or severe injury.

- **Always use an attachment dedicated to power tools.**

Always use the tip tool dedicated to power tools for the equipment since the tip tool for manual use might cause damage and scattering of fragments.

● **Make sure to remove the air hose.**

Make sure to mount or replace a socket after stopping supply of compressed air and removing the air hose. Close the main cock to stop air supply with the air hose and then press the start switch of this equipment to open the valve to discharge the residual air in the air hose before removing the air hose unless the protective equipment (couplings, etc.) for automatic air insulation is used.

● **Securely mount a socket on the equipment.**

After mounting, gently pull the tip tool to check that it does not come off before use.

● **Perform regular check of the socket.**

Always check that the tip tool and insertion part of the tip tool of this equipment is not worn and damaged and ask us for check and repair as necessary. In particular, when the heavy backlash is found between the socket and socket insertion part of this equipment, it may cause damage and an injury; therefore do not use it.

● **Securely insert the sockets into the bolt or nut.**

Securely insert the sockets into the bolt or nut since it is very dangerous that the socket is removed from the bolt or nut during use.

■ **Mounting and replacing pads, disc papers, grinding stones, and other accessories.**



Warning

● **Always use appropriate pads, disc papers, grinding stones, and other accessories.**

Always use the accessories dedicated to power tools for the equipment since the accessory for manual use may cause damages. And always check if accessories are not damaged, worn or torn.

● **Do not use worn, dull, and/or damaged accessories.**

Worn, dull, and damaged accessories do not function as intended. And they may also cause death and injury.

● **Do not use wet accessories or soaked accessories.**

● **Do not use cutting stone for grinders.**

● **Always be careful with foreign materials to be interfered between the tool and the accessory.**

The accessory may be dropped out when operating.

■ **Basic cautions for use of pneumatic tool.**



Caution

● **Be fully careful when working.**

Do not let your guard down and be fully careful when working since the thoughtless and preposterous actions and use when you are tired is a cause of an injury and accidents.

● **Keep off other persons.**

Keep off other persons than the person involved at the work place. In particular, it is dangerous for children.

● **Do not use the product unreasonably.**

Unreasonable and overloaded use is a cause of damage and failure of the air tool. Make sure to use the product within the capacity.

● **Be fully careful for the exhaust direction.**

Be careful for the exhaust direction and avoid direct exposure of exhaust to eyes and ears since it is a cause of accidents and diseases.

● **Handle the pneumatic tool carefully.**

Rough handling is a cause of accidents and failure. Do not make an impact on the air tool by throwing and dropping it.

● **Handle the air hose carefully.**

Do not use the air hose to support, raise, and lower the air tool. Damage of the air hose is a cause of accidents.

● **Be careful for dropping the pneumatic tool when working at a high place.**

Take countermeasures for preventing the air tool from dropping and accidents to be occurred thereby with a safety wire or others when working at a high place.

● **Take full consideration for storage.**

Carefully maintain the product and keep it in a dry place where is beyond reach of children when it is not used.

● **Do not carry tools by air hose.**

Tools may start accidentally. This may cause injury or damage to tools and accessories.

Warning and Caution for Handling

■ **Others**



Warning

● **Do not use for other purposes than the specified.**

Do not use the product for other purposes than the specified in any case since it is a cause of accidents.

● **Do not modify the product in any case.**

Do not modify and use the product in any cases. It may cause death or severe injury.

● **Do not dismantle parts.**

Do not use the product which parts are removed in any case. It may cause death or severe injury.

● **Stop air supply and remove the air hose from the pneumatic tool when the danger is expected to occur.**

Make sure to stop air supply and remove the air hose from the pneumatic tool when the product is not used and maintained, and the tip tool is replaced.



■ **Maintenance, check, and repair.**



Caution

● **Make sure to check the product before use.**

Inspect tools visually before use. Do not use tools if they appear damaged.

Make sure to check the loosening of screws and damage on parts before use. It may cause not only worsening of performance and failure but also danger.

● **Make sure to carry out maintenance and check.**

Perform regular maintenance and check for safety and efficient work.

● **Drain water in the air filter and air compressor tank before and after work.**

● **Contact us or our certified service factory for repair.**

Contact us or our certified service factory through the purchased shop or our distributor for repair.

Please note that we are not responsible for the accident or malfunction caused by your arbitrary treatment.

● **Proper maintenance of air tools is suggested for safety and efficiency.**



U.K.	:EC DECLARATION OF CONFORMITY	Individual machinery and safety components
France	:DÉCLARATION DE COMFORMITÉ CE	Machine seule et composants de sécurité
Deutschland	:EG KONFORMITÄTSEKTLÄRUNG	Gesamtmaschine und Sicherheitseinrichtungen
España	:DECLARACIÓN DE CONFORMIDAD CE	Maquinaria individual y componentes de seguridad
Italia	:DICHIARAZIONE DI CONFORMITÀ CE	Macchina singola e componenti di sicurezza
Portugal	:DECLARAÇÃO DE CONFORMIDADE CE	Maquinaria individual e dispositivos de segurança
Nederland	:EG KONFORMITEITSVERKLARING	Individuele machine en veiligheidscomponenten
Danmark	:EF ERKLÆRING OM OVERENSSTEMMELSE	Enkle maskin og sikkerhedskomponenter
Sverige	:EG-DEKLARATION OM ÖVERENSSTÄMMELSE	Individuell maskin och säkerhetskomponenter
Norge	:EF EVERENSSTEMMELSESERKLÆRING	Individuel maskine og sikkerhedsudstyr
Suomi	:EY:N VAATIMUSTENMUKAISUUSILMOITUS	Erilliset koneistot ja turvalaitteet
Hellas	:ΔΗΛΩΣΗ ΣΥΜΜΟΡΦΩΣΗΣ ΣΕ ΟΔΗΓΙΑ ΤΗΣ ΕΥΡΩΠΑΙΚΗΣΚΟΙΝΟΤΗΤΑΣ	Ανεξάρτητο μηχανήματα και εξαρτήματα ασφαλείας



We **KUKEN CO.,LTD.** -Osaka, Japan declare under our sole responsibility that the product: to which declaration relates, is in conformity with the requirements of the Council Directive of 17 May 2006 on the approximation of the laws of the Member States relating to machinery(2006/42/EC).

Nous **KUKEN CO.,LTD.**-Osaka, Japon déclarons sous notre seule responsabilité exclusive que le produit: auquel se réfère cette déclaration est conforme à la directive du conseil du 17 mai 2006, concernant le rapprochement des législations des états membres, relatives aux machines (2006/42/CE).

Wir **KUKEN CO.,LTD.**-Osaka, Japan erklären hiermit in alleiniger Verantwortung, daß das Produkt auf das sich diese Erklärung bezieht, den Anforderungen der "Richtlinie des Rates vom 17. Mai 2006 zur Angleichung der Rechtsvorschriften der Mitgliedsstaaten für Maschinen (2006/42/EG) entspricht.

Nosotros **KUKEN CO.,LTD.**-Osaka, Japón declaramos bajo nuestra sola responsabilidad que el producto a que se refiere esta declaración, es conforme a los requisitos de la Directiva del Consejo de 17 de mayo 2006 sobre la aproximación de las leyes de los Estados Miembros con relación a la maquinaria (2006/42/CE).

Noi **KUKEN CO.,LTD.**-Osaka, Giappone dichiariamo sotto nostra unica responsabilità che il prodotto cui questa dichiarazione si riferisce, è conforme ai requisiti della Direttiva del Consiglio del 17 maggio 2006, sul ravvicinamento delle legislazioni degli Stati Membri relative alle macchine (2006/42/CE).

Nós **KUKEN CO.,LTD.**-Osaka, Japão declaramos sob nossa exclusiva responsabilidade que o produto a que se refere esta declaração está em conformidade com os requisitos da Directiva do Conselho de 17 de Maio de 2006 na avaliação das leis dos Estados Membros relacionadas com maquinaria (2006/42/CE).

Wij **KUKEN CO.,LTD.**-Osaka, Japan verklaren onder onze exclusieve verantwoordelijkheid dat het product waarop deze verklaring betrekking heeft, in overeenstemming is met de vereisten van de Richtlijn van de Raad van 17 mei 2006 inzake de onderlinge aanpassing van de wetgevingen van de Lid-Staten betreffende machines(2006/42/EG).

Vi **KUKEN CO.,LTD.**-Osaka, Japan erklærer herved under vort fulde ansvar at maskinen, som denne erklæring gælder for, er i overensstemmelse med de krav som findes i Ministerrådets direktiver af 17. Maj 2006 om tilnærming af medlemsstaternes love vedrørende maskindirektivet (2006/42/EF).

Vi, **KUKEN CO.,LTD.**-Osaka, Japan förklarar härmed på vårt fulla ansvar att maskinen för vilken denna deklARATION gäller, överensstämmer med kraven i Ministerrådets direktiv av den 17 maj 2006 om harmonisering av Medlemsstaternas lagar rörande maskiner (2006/42/EG).

Vi **KUKEN CO.,LTD.**-Osaka, Japan erklærer under eget ansvar, at produktet hvortil denne erklæring relaterer seg, er i overensstemmelse med kravene i Rådets Direktiv av 17. mai 2006 vedr. tilnærmelse mellom medlemslandenes lover for maskiner (2006/42/EF).

Me **KUKEN CO.,LTD.**-Osaka, Japan vakuutamme olevamme yksinomaisessa vastuussa siitä, että tämä tuote johon tämä ilmoitus viittaa on yhdenmukainen EY:n komission direktiivin, annettu 17 toukokuu 2006 kanssa, joka koskee yhteisön jäsenvaltioiden koneita koskevan lainsäädännön lähentämistä (2006/42/EY).

Εμείς **KUKEN CO.,LTD.**-Οζάκα, Ιαπωνία δηλώνει κάτω από τη μόνη ευθύνη μας ότι το προϊόν το οποίο αυτή η δήλωση αφορά, είναι σύμφωνα με τις απαιτήσεις της οδηγίας του Συμβουλίου της 17 Μαΐου του 2006 σχετικά με την προσέγγιση των νομοθεσιών των κρατών μελών σχετικά με τα μηχανήματα (2006/42/EK).

MANAGING DIRECTOR



ISSUED BY : KUKEN CO.,LTD.
ADDRESS : 3-6-15 NONOUE, HABIKINO-SHI,
OSAKA 583-0871, JAPAN
TEL : +81-72-953-3346
FAX : +81-72-953-0605
WEB-SITE : <http://www.kuken.co.jp/english/>
E-MAIL : export1@kuken.co.jp

CAT.NO. 101022-3