



MODEL **KW-4500G, GL**

MODEL **KW-4500GS, GLS**

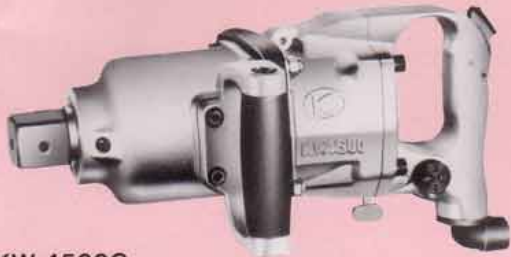
IMPACT WRENCH

Original "N-type" Impact Wrench

"with an innovative no-hammer clutch system newly developed by KUKEN."

1" SQ. and/or #5 SPLINE DRIVE

Do not operate with air pressure about 6.3 kg/cm² !



KW-4500G



KW-4500GL
with extended anvil



KW-4500GS
with #5 spline anvil



KW-4500GLS
with extended #5 spline anvil

FEATURES:

- Excellent power, compactness and light-weight with minimum vibration.
Most logical mechanism for incredible power to weight ratio among impact wrenches ever produced in the world.
- Accurate thread fastening works with patented N-clutch impact mechanism.
No loss of lubricant in the clutch facilitates this operation.
- Increased durability achieved by excellent clutches and less damage to bolts and nuts by "Shift-on" action.
- Grip handle with inside trigger is available as optional.
- Low noise level and minimum air consumption.

APPLICATIONS:

- Industrial use:
Construction works, Machineries, Shipbuildings, Steel fabrications, etc.
- Automotive Service:
Truck and trailer wheel nuts.
Heavy duty works on all types of over road truck equipments, earth moving equipments, road construction equipments.

SPECIFICATIONS: (Performance figures are at 6.3 kg/cm² (90P.S.I.) air pressure.)

| | | |
|-------------------------|----------------|-----------------|
| Capacity Bolt Size | 48 mm | 1 7/8" |
| Blows Per Min. | 700 | |
| Speed R.P.M. | 4,000 | |
| Maximum Torque | 3,750 Nm | 2,760 ft-lb |
| Recommended Torque | 1,000~2,500 Nm | 740~1,840 ft-lb |
| Length: KW-4500G | 350 mm | 13 11/16" |
| KW-4500GL | 515 mm | 20 1/4" |
| KW-4500GS | 368 mm | 14 1/2" |
| KW-4500GLS | 515 mm | 20 1/4" |
| Weight: KW-4500G | 10.7 kg | 23.6 lbs |
| KW-4500GL | 11.6 kg | 25.5 lbs |
| KW-4500GS | 11 kg | 24.2 lbs |
| KW-4500GLS | 11.7 kg | 25.8 lbs |
| Side to Center Pistance | 58 mm | 2 5/16" |
| Ave. Air Consumption | 310 l/min | 11.0 c.f.m. |
| Hose Size Recommended | 13 mm | 1/2" |
| Air Inlet Thread Size | 1/2" * | |

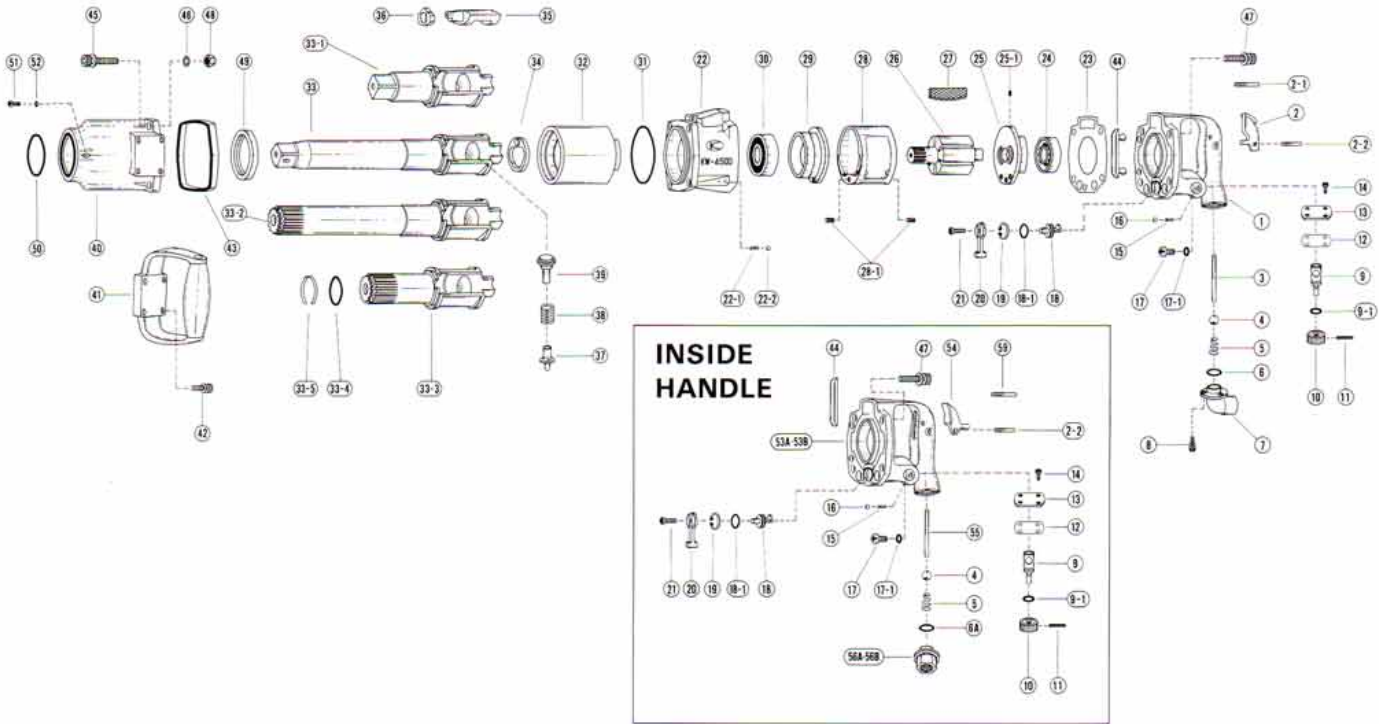
* IMPORTANT: B.P.T. or N.P.T. for your choice.

* This tool does not require high air pressure to achieve its maximum torque continuous operation at pressure higher than 6.3 kg/cm² may cause component failure and shorter tool life.



EXPLODED VIEW

KW-4500G·GL·GS·GLS
KW-4510G·GL·GS·GLS (Low Pressure)



PARTS LIST

| REF. NO. on DRAW. | PART NUMBER | PART NAME | Q'TY. | REF. NO. on DRAW. | PART NUMBER | PART NAME | Q'TY. |
|----------------------|----------------|-------------------------|-------|-------------------------------|----------------|------------------------|-------|
| 1 | 0132980 | Handle C.P. | 1 | 28-1 | Z0565x8 | Spring Pin | 2 |
| 2 | 0132117D | Throttle Lever | 1 | 29 | 0545023 | Front End Plate | 1 |
| 2-1 | Z0614x26 | Pin | 1 | 30 | Z0016206Z | Ball Bearing | 1 |
| 2-2 | Z0584x22 | Pin | 1 | 31 | Z041S95 | "O" Ring | 1 |
| 3 | 0132911 | Throttle Valve Pin | 1 | 32 | 0545026 | Hammer Wheel | 1 |
| 4 | Z0115/8D | Throttle Valve | 1 | 33 | 0545130A | Anvil (GL) | 1 |
| 5 | 0132190 | Throttle Valve Spring | 1 | 33-1 | 0545030A | Anvil (G) | 1 |
| 6 | Z040P20 | "O" Ring | 1 | 33-2 | 05452841A | Splin Anvil C.P. (GLS) | 1 |
| 6A | Z040P28J | "O" Ring | 1 | 33-3 | 05453841A | Splin Anvil C.P. (GS) | 1 |
| 7 | 0132919 | Inlet Bushing | 1 | 33-4 | Z040P26 | "O" Ring | 1 |
| 8 | Z0665x14A | Bolt | 4 | 33-5 | 0132202 | Retainer Ring | 1 |
| 9 | 0438013 | Regulator Valve | 1 | 34 | 0545050 | Retainer | 1 |
| 9-1 | Z040P16J1 | "O" Ring | 1 | 35 | 0545028 | Anvil Piece | 1 |
| 10 | 0442314 | Regulator Valve Knob | 1 | 36 | 0545027 | Cam | 1 |
| 11 | Z0563x22 | Pin | 1 | 37 | 0545051B | Plunger (A) | 1 |
| 12 | 01329181 | Cover Cup Gasket | 1 | 38 | 0545053 | Spring (4500G) | 1 |
| 13 | 0132918 | Cover Cup | 1 | 38 | 0545053L | Spring (4510G) | 1 |
| 14 | Z0685x10 | Screw | 4 | 39 | 0545052B | Plunger (B) | 1 |
| 15 | 0114193 | Knock Spring | 1 | 40 | 0545182 | Impact Housing C.P. | 1 |
| 16 | Z0104D | Steel Ball | 1 | 41 | 0442387 | Dead Handle C.P. | 1 |
| 17 | Z0848x10 | Screw | 1 | 42 | Z0666x16A | Bolt | 4 |
| 17-1 | Z040P8 | "O" Ring | 1 | 43 | 0132934 | Front Rubber Protector | 1 |
| 18 | 0132916 | Reverse Valve | 1 | 44 | 0132940 | Rear Rubber Protector | 1 |
| 18-1 | Z041S18 | "O" Ring | 1 | 45 | Z0668x38A | Bolt | 4 |
| 19 | Z03121 | Retainer Ring | 1 | 46 | Z0968x1 | Washer | 4 |
| 20 | 0132915 | Reverse Lever | 1 | 47 | Z0668x25A | Bolt | 4 |
| 21 | Z0674x12 | Screw | 1 | 48 | Z0918 | Lock Nut | 4 |
| 22 | 0545181 | Motor Case C.P. (4500G) | 1 | 49 | 0545029 | Bushing | 1 |
| 22 | 0545181L | Motor Case C.P. (4510G) | 1 | 50 | Z01742556 | Oil Seal | 1 |
| 22-1 | 0132991 | Knock Spring | 1 | 51 | Z0846x8 | Screw | 1 |
| 22-2 | Z0106D | Steel Ball | 1 | 52 | Z040P6 | "O" Ring | 1 |
| 23 | 0132906 | Motor Housing Gasket | 1 | PART FOR INSIDE HANDLE | | | |
| 24 | Z0016204 | Ball Bearing | 1 | 53A | 0132980NiSF | Handle C.P. (NPT) | 1 |
| 25 | 0132924 | Rear End Plate | 1 | 53B | 0132980iSF | Handle C.P. (PT) | 1 |
| 25-1 | Z0564x10 | Spring Pin | 1 | 54 | 0345417 | Throttle Lever | 1 |
| 26 | 0545021 | Rotor | 1 | 55 | 0132911i | Throttle Valve Pin | 1 |
| 27 | 0545022 | Blade | 6 | 56A | 0132919NiS | Inlet Bushing (NPT) | 1 |
| 28 | 0333020A | Cylinder | 1 | 56B | 0132919iS | Inlet Bushing (PT) | 1 |

KUKEN CO., LTD.

P.O. BOX 20, FUJIEDERA OSAKA 583 JAPAN
 3-6-15, NONOUE, HABIKINO-SHI, OSAKA JAPAN
 PHONES, HANNAN: (0729) 53-0601
 FAX: (0729) 53-0605

CAT.97.03