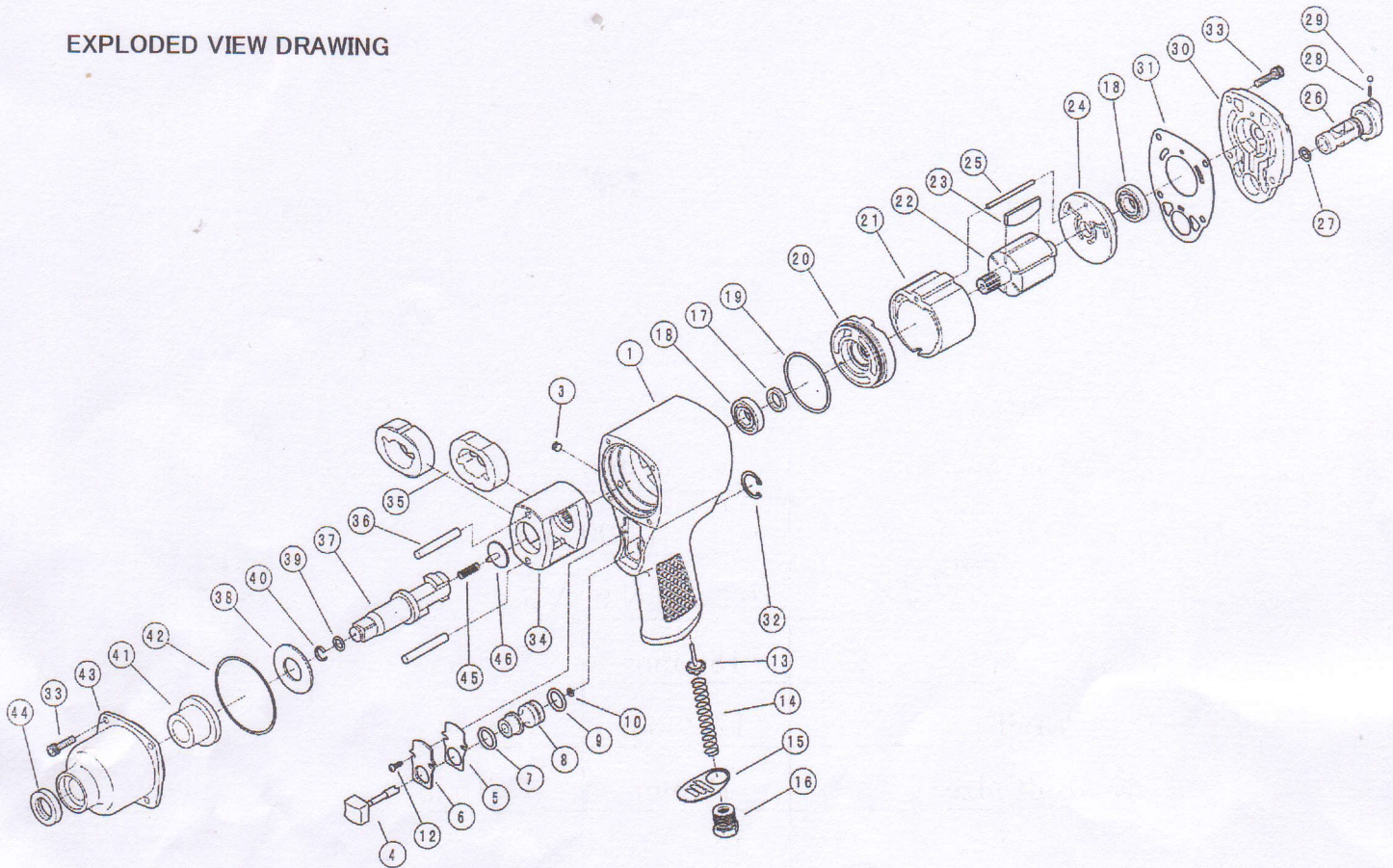


KW-18HP

EXPLODED VIEW DRAWING



PARTS LIST

REF.NO. on DRAW	PART NUMBER	PART NAME	Q'TY.	REF.NO. on DRAW	PART NUMBER	PART NAME	Q'TY.
1	0118M81A	MOTOR CASE C.P.	1	25	0118M201	PIN	1
2	0118M171	O-RING	1	26	0118M17A	REVERSE REGULATOR	1
3	0118M013	OIL PLUG	1	27	0118M176	O-RING	1
4	0118M12A	THROTTLE LEVER	1	28	0118M162	SPRING	1
5	0118M121	STOP COVER	1	29	0118M164	STEEL BALL	1
6	0118M122	STOP COVER GASKET	1	30	0118M03	CASE COVER	1
7	0118M172	O-RING	1	31	0118M06	MOTOR GASKET	1
8	0118M10A	THROTTLE BUSHING	1	32	0118M152	RETAINER RING	1
9	0118M173	O-RING	1	33	0118M033	BOLT	8
10	0118M174A	E-RING	1	34	0118M26	IMPACT CAGE	1
12	0118M94	TAPPING SCREW	2	35	0118M28	HAMMER	2
13	0118M13	THROTTLE VALVE PIN	1	36	0118M29	HAMMER PIN	2
14	0118M90	THROTTLE VALVE SPRING	1	37	0118M843	ANVIL C.P.	1
15	0118M012	EXHAUST COVER	1		0118M844	ANVIL C.P. 2" LONG	1
16	0118M11	INLET BUSHING	1	38	0118M31	SPACER	1
17	0114M031	OIL SEAL	1	39	0114M251	O" RING	1
18	Z001EE4	BALL BEARING	2	40	0114M252	RETAINER RING	1
19	0118M175	O-RING	1	41	0118M19	CASE BUSHING	1
20	0118M23	FRONT END PLATE	1	42	0118M177	O-RING	1
21	0118M20	CYLINDER	1	43	0118M82A	IMPACT HOUSING C.P.	1
22	0118M21A	ROTOR	1	44	0118M022	OIL SEAL	1
23	0118M22A	ROTOR BLADE	6	45	0118M38	THRUST SPRING	1
24	0118M24	REAR END PLATE	1	46	0118M43	THRUST BUTTON	1