



MODEL KW-20P IMPACT WRENCH

3/4" SQ. DRIVE



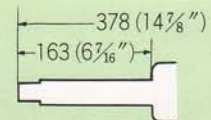
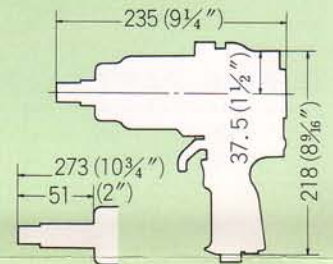
KW-20P-2



KW-20P



KW-20P-6



FEATURES:

- Extra rugged tool with extra tough impact mechanism.
- Fast, rugged hard hitting for heavy duty jobs.
- Ideal for truck and equipment maintenance.
- All ball bearing construction.

APPLICATIONS:

Automotive service:

Truck wheel nuts, Truck U-bolts, General fleet maintenance, Spring repair shops.

Industrial:

Bridge-construction, Shipbuilding, Construction machinery, Heavy duty industrial engine, etc.

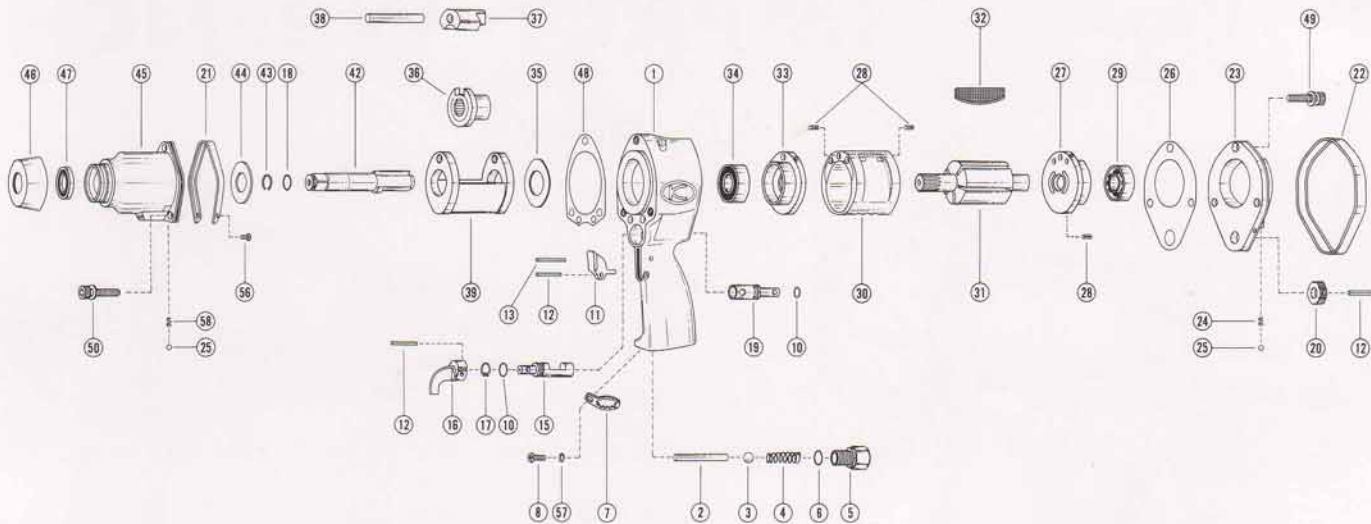
SPECIFICATIONS: (Performance figures are at 6.3kg/cm² (90P.S.I.) air pressure.)

Capacity Bolt Size	20mm	3/4"
Speed R.P.M.	5,500	
Impacts per Min.	1,080	
Length KW-20P	235mm	9 1/4"
KW-20P-2	273mm	10 3/4"
KW-20P-6	378mm	14 8/7"
Weight KW-20P	4.2kg	9.2lbs
KW-20P-2	4.3kg	9.5lbs
KW-20P-6	4.6kg	10lbs
Air Consumption	0.45m ³ /min	15.7 c.f.m
Hose Size	9.5mm	3/8"
Air Inlet Thread Size	1/4" *	
Air Pressure	3~10kg/cm ²	45~140P.S.I

* IMPORTANT: B.S.P. or N.P.T. is optional.



EXPLODED VIEW



REPAIR PARTS LIST

REF. NO. on DRAW.	PART NUMBER	PART NAME	Q'TY.	REF. NO. on DRAW.	PART NUMBER	PART NAME	Q'TY.
1	0120281	Motor Casing C.P.	1	28	Z0563×8	Roll Pin	3
2	0120213	Throttle Valve Pin	1	29	Z0016202	Rear Bearing	1
3	Z0117/16D	Throttle Valve Ball	1	30	0120115	Cylinder	1
4	0114190	Throttle Valve Spring	1	31	0120216	Rotor	1
5	0114111	Inlet Bushing	1	32	0120117	Rotor Blade	5
6	Z040P14	"O" Ring	1	33	0120113	Front End Plate	1
7	0114109	Inlet Bushing Spacer	1	34	Z0016202Z	Front Bearing	1
8	Z0815×10	Screw	1	35	0120119	Spacer	1
				36	0120121	Cam	1
10	Z040P10	"O" Ring	2	37	0120122	Hammer	1
11	0114112	Throttle Lever	1	38	0120123	Hammer Pin	1
12	Z0563×16	Pin	3	39	0120120	Impact Cage	1
13	Z0563×22	Pin	1	42	01202843	Square Drive Anvil C.P.	1
15	0114115	Reversing Valve	1	42	01202844	2 Ex. Sq. Dr. Anvil C.P.	1
16	0114116	Revers Lever	1	42	01202845	6 Ex. Sq. Dr. Anvil C.P.	1
17	Z03015	Retainer Ring	1	43	0120128	Retainer Ring	1
18	Z040P14	"O" Ring	1	44	0120126	Thrust Plate	1
19	0120209	Regulating Valve	1	45	0120282A	Impact Housing C.P.	1
20	0120210	Regulating Valve Knob	1	46	0120107	Rubber Nose Seal	1
21	0120270	Front Rubber Protector	1	47	Z01625385	Oil Seal	1
22	0120271	Rear Rubber Protector	1	48	0120104	Housing Gasket	1
23	0120288	Backhead Cover C.P.	1	49	Z0666×18A	Rear Bolt	3
24	0114192	Spring	1	50	Z0666×25A	Front Bolt	3
25	Z0104D	Steel Ball	2	56	Z0804×12	Tapping Screw	2
26	0120205	Motor Housing Gasket	1	57	Z0965×2	Washer	1
27	0120113	Rear End Plate	1	58	0114193	Spring	1

KÜKEN CO., LTD.

P.O. BOX 20, FUJIEDERA OSAKA 583 JAPAN
 3-6-15, NONOUE, HABIKINO-SHI, OSAKA JAPAN
 PHONES, HANNAN: (0729) 53-0601
 FAX: (0729) 53-0605