



MODEL **KW-45F,FS**
IMPACT WRENCH

1" 1/2" SQ. and/or #5 SPLINE DRIVE

"New Heavy Duty"



KW-45F



KW-45FS



FEATURES:

- Mighty torque performance for all heavy duty works.
- Excellent durability.
- Well-balanced for easy handling.
- Simplified power regulator and reverse mechanism.
- Optional grip with trigger.
- 1" sq. dr. is available as optional.

APPLICATIONS:

Heavy duty work on all types of over road truck equipment. Mill and mine applications. All earth moving equipments. Road construction equipments, shipbuilding.

Automotive service:

Truck and trailer wheel nuts, u-bolts, heavy duty nuts for budd wheels.

Industrial work:

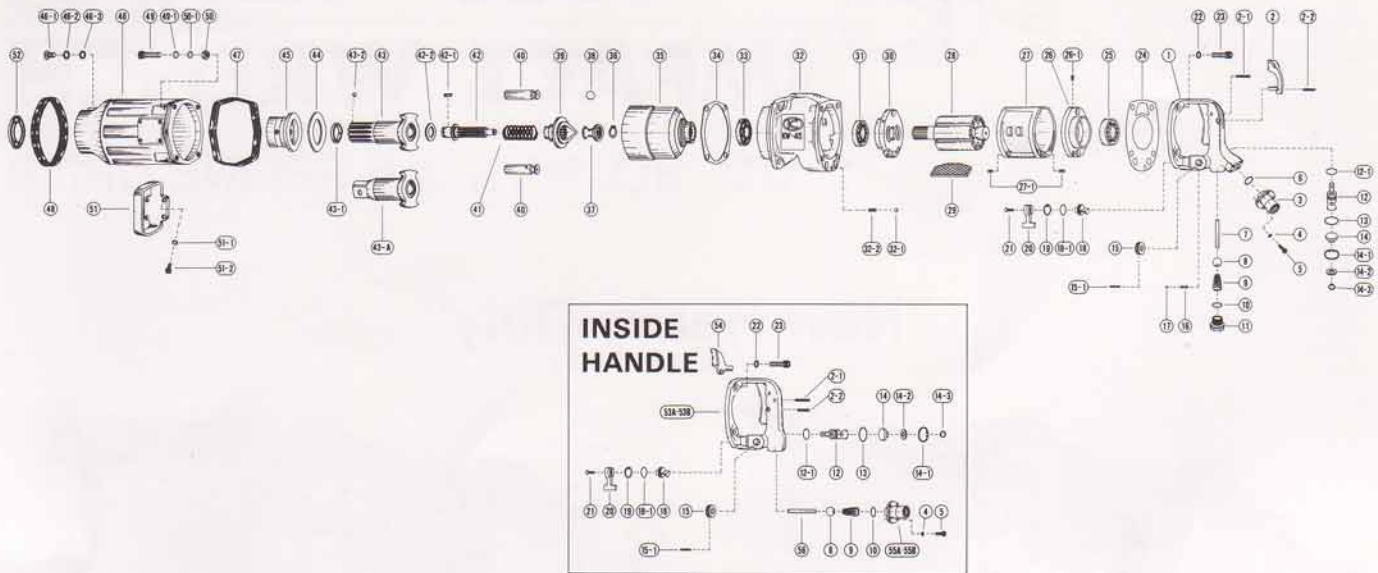
Construction machinery, shipbuilding, steel fabrication, heavy duty industrial engine service.

SPECIFICATIONS: (Performance figures are at 6.3 kg/cm² (90 psi) air pressure.)

Capacity bolt size	45 mm	1 3/4"
Impacts per min.	550	
Speed r.p.m.	2,800	
Air consumption	400 l/min	14 c.f.m.
Length: KW-45F	452 mm	17 5/16"
KW-45FS	452 mm	17 5/16"
Weight: KW-45F	16.5 kg	36 1/4 lbs
KW-45FS	15.5 kg	36 1/4 lbs
Hose size	12.7 mm	1/2"
Air inlet thread size	1/2" *	
Air pressure	5~10 kg/cm ²	71~140 psi

* IMPORTANT: B.S.P. or N.P.T. per your choice.

EXPLODED VIEW



PARTS LIST

REF. NO. on DRAW.	PART NUMBER	PART NAME	Q'TY.	REF. NO. on DRAW.	PART NUMBER	PART NAME	Q'TY.
1	0142080B	Handle C.P.	1	32-2	0132991	Knock Spring	1
2	0132117D	Throttle Lever	1	33	Z0016208Z	Ball Bearing	1
2-1	Z0614x28	Pin	1	34	0345207	Impact Housing Gasket	1
2-2	Z0614x22	Pin	1	35	0345226	Hammer Wheel	1
3	0345290	Inlet Bushing	1	36	Z03210	Retainer	1
4	Z0965x1	Washer	4	37	0345143	Ball Guide	1
5	Z0665x12	Bolt	4	38	Z01011/16	Steel Ball	1
6	Z040P16	"O" Ring	1	39	0345227	Cam	1
7	0142013B	Throttle Valve Pin	1	40	0345229	Hammer Pin	2
8	Z011518D	Throttle Valve	1	41	0345138	Spring	1
9	0132190	Throttle Spring	1	42	0345242	Cam Shaft	1
10	Z040P20	"O" Ring	1	42-1	0350143	Pin	1
11	0132150	Plug	1	42-2	0345147	Specer	1
12	0442313	Regulator Valve	1	43	03452844	Spline Anvil C.P.	1
12-1	Z040P14	"O" Ring	1	43-A	0345230	1-1/2" Anvil	1
13	Z041S25	"O" Ring	1	43-B	03452301	1" SQ. Anvil	1
14	0442350	Regulator Valve Plate	1	43-1	0333045	Ball Retainer	1
14-1	Z03125	Retainer	1	43-2	Z0106D	Steel Ball	1
14-2	04423501	Regulator Valve Lock Plate	1	44	0345225	Collars	1
14-3	Z03210	Retainer	1	45	0345232	Spindle Bushing	1
15	0442314	Regulator Valve Knob	1	46	0345603	Impact Housing C.P.	1
15-1	Z0563x22	Pin	1	46-1	0132152	Oil Screw	1
16	Z0104D	Steel Ball	1	46-2	Z0996	Toothed Lock Washer	1
17	0114193	Knock Spring	1	46-3	Z040P6	"O" Ring	1
18	0142015B	Reverse Valve	1	47	0142071	Rear Rubber Protector	1
18-1	Z041S18	"O" Ring	1	48	0142070	Front Rubber Protector	1
19	Z03121	Retainer	1	49	Z0668x40	Bolt	4
20	0132915	Reverse Lever	1	49-1	Z0968x1	Washer	4
21	Z0674x12	Screw	1	50	Z0918	Lock Nut	4
22	Z0968x1	Washer	4	50-1	Z0968x1	Washer	4
23	Z0668x22	Bolt	4	51	0132104	Dead Handle	1
24	0142006B	Motor Gasket	1	51-1	Z0966x1	Washer	4
25	Z0016205	Ball Bearing	1	51-2	Z0666x16	Bolt	4
26	0132124	Rear End Plate	1	52	Z01650656	Oil Seal	1
26-1	Z0565x10	Spring Pin	1	PART FOR INSIDE HANDLE			
27	0140509	Cylinder	1	53A	0345480BN	Handle C.P. (NPT)	1
27-1	Z0565x10	Pin	2	53B	0550180BT	Handle C.P. (PT)	1
28	0142021	Rotor	1	54	0345417	Throttle Lever	1
29	0140512	Rotor Blade	6	55A	0345490N	Inlet Bushing (NPT)	1
30	0132124	Front End Plate	1	55B	6550190T	Inlet Bushing (PT)	1
31	Z0016205Z	Ball Bearing	1	56	0550113BT	Throttle Lever Pin	1
32	0345281B	Motor Case C.P.	1				1
32-1	Z0106D	Steel Ball	1				

KUKEN CO., LTD.

P.O. BOX 20, FUJIEDERA OSAKA 583 JAPAN
 3-6-15, NONOUE, HABIKINO-SHI, OSAKA JAPAN
 PHONES, HANNAN: (0729) 53-0601
 CABLE ADDRESS: KUKEN OSAKAHANNAN
 FAX: (0729) 53-0605