

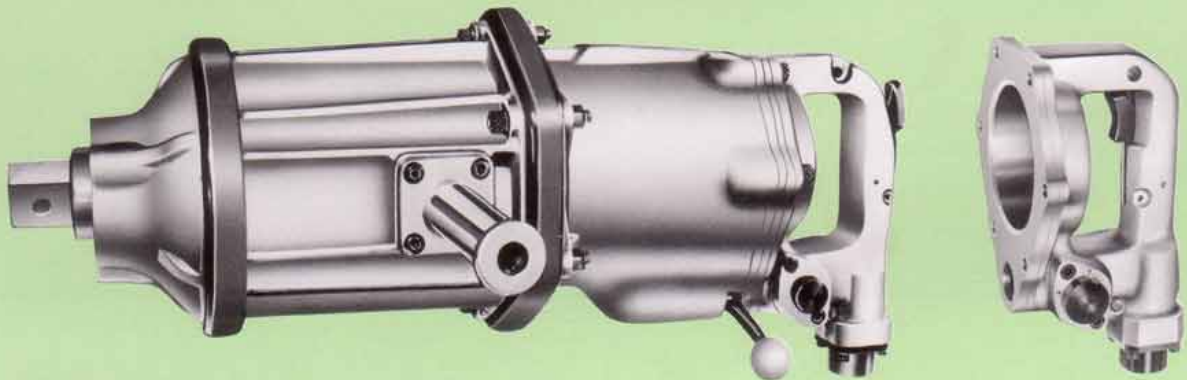


MODEL **KW-75F**

IMPACT WRENCH

1 1/2" SQ. DRIVE

"For Heavy Assembly Works"



"Grip handle with inside trigger is available as optional"

FEATURES:

- New impact mechanism for lighter weight and powerful performance.
- Excellent durability.
- Low noise level and minimum air consumption.

APPLICATIONS:

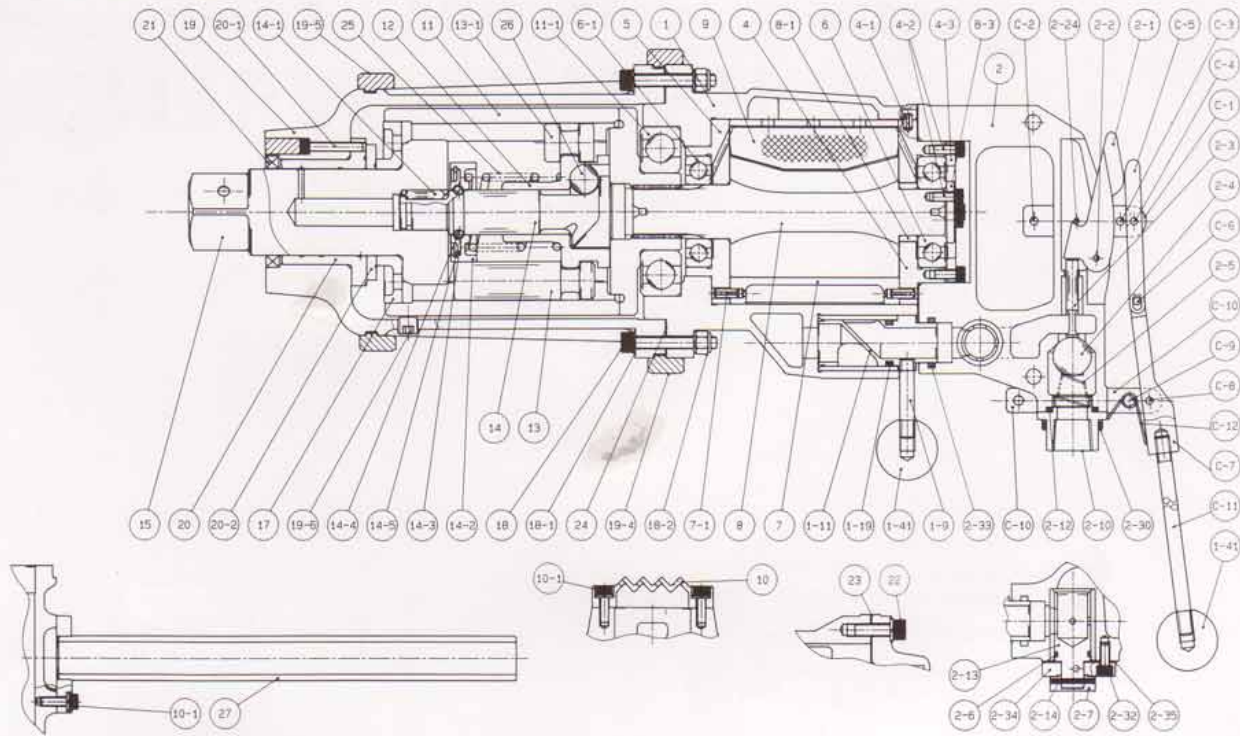
Safety and most efficient works in shipyards, chemical processing plants, road construction, equipments and heavy manufacturing plants.

SPECIFICATIONS: (Performance figures are at 6.3 kg/cm² (90 psi) air pressure.)

Capacity bolt size	75 mm	3"
Impacts per min.	350	
Free speed r.p.m.	2,200	
Length	600 mm	23 1/2"
Weight	34.5 kg	75.9 lbs
Air consumption	500 l/min	17.5 c.f.m.
Hose size	15.2 mm	3/4"
Air inlet thread size	3/4"*	
Air pressure	5~10 kg/cm ²	71~140 psi

* IMPORTANT: B.S.P. or N.P.T. is optional.

EXPLODED VIEW



REPAIR PART LIST

REF. NO. on DRAW.	PART NUMBER	PART NAME	Q'TY.	REF. NO. on DRAW.	PART NUMBER	PART NAME	Q'TY.
1	0350181	Motor Housing C.P.	1	8-2	Z0666x14	Bolt	3
1-9	0350116	Reverse Lever	1	8-3	03501212	Bearing Plate (Inner)	1
1-11	0360115	Revering Valve	1	9	0350122	Rotor Blade	6
1-19	Z040P24	"O" Ring	1	10	0350157	Exhaust Cover	1
1-41	Z11030x3/8	Handle	2	10-1	Z0666x18A	Bolt	2
2	0350180	Spade Handle C.P.	1	11	0350126	Hammer Wheel	1
2	03501801	Spade Handle C.P. (Inside Trigger)	1	11-1	Z0016310Z	Ball Bearing	1
2-1	0350112A	Throttle Lever	1	12	0350127B	Cam	1
2-1	03501471	Throttle Lever (Inside Trigger)	1	13	0350129	Hammer Pin	2
2-2	Z0614x22	Pin	1	13-1	03501291	Guide Pin	2
2-3	0350111	Throttle Pin	1	14	0350142A	Cam Shaft	1
2-4	Z0118/8D	Throttle Valve	1	14-1	0350143	Pin	1
2-5	0350190	Throttle Spring	1	14-2	0350148	Spacer	1
2-6	Z040P20	"O" Ring	1	14-3	03501483	Spacer Plate	1
2-7	03501171	Regulating Valve Knob	1	14-4	Z0106D	Steel Ball	14
2-10	0350151	Inlet Bushing	1	14-5	Z03156	Stopping	1
2-12	Z040P26	"O" Ring	1	15	0350130	Anvil	1
2-13	0350117	Regulating Valve	1	17	0350131	Collar	1
2-14	Z0563x28	Pin	1	18	Z0668x55	Bolt	6
2-24	Z0614x26	Pin	1	18-1	Z0968x1	Washer	12
2-30	Z0665x16A	Bolt	4	18-2	Z0918	Nut	6
2-31	Z0965x1	Washer	4	19	0350182	Impact Housing C.P.	1
2-32	Z0666x14	Bolt	2	19-4	03501031	Rear Rubber Protector	1
2-33	Z040P26	"O" Ring	1	19-5	03501032	Front Rubber Protector	1
2-34	0350119	Regulating Valve Plate	1	19-6	Z0751/4	Plug	1
2-35	03501191	Regulating Valve Gasket	1	20	0350149	Case Bushing	1
4	0350123	Rear End Plate	1	20-1	Z0666x35	Bolt	3
4-1	Z0566x10	Pin	1	20-2	0350132	Thrust Plate	1
4-2	Z0666x14	Bolt	7	21	Z01856729	Oil Seal	1
4-3	0350123	Bearing Plate (Outer)	1	22	Z0668x25	Bolt	6
5	0350124	Front End Plate	1	23	0350106	Rear Gasket	1
6	Z0016306Z	Ball Bearing	1	24	0350107	Front Gasket	1
6-1	Z0016207	Ball Bearing	1	24	0350138	Spring	1
7	0350120	Cylinder	1	26	Z0103/4D	Steel Ball	1
7-1	Z0566x16	Pin	2	27	0350152	"D" Handle	2
8	0350121	Rotor	1				
8-1	03501211	Rotor Spacer	1		"C":option		

KÜKEN CO., LTD.

P.O. BOX 20, FUJIIEDERA OSAKA 583 JAPAN
 3-6-15, NONOUE, HABIKINO-SHI, OSAKA JAPAN
 PHONES, HANNAN: (0729) 53-0601
 FAX: (0729) 53-0605

CAT. 96.7