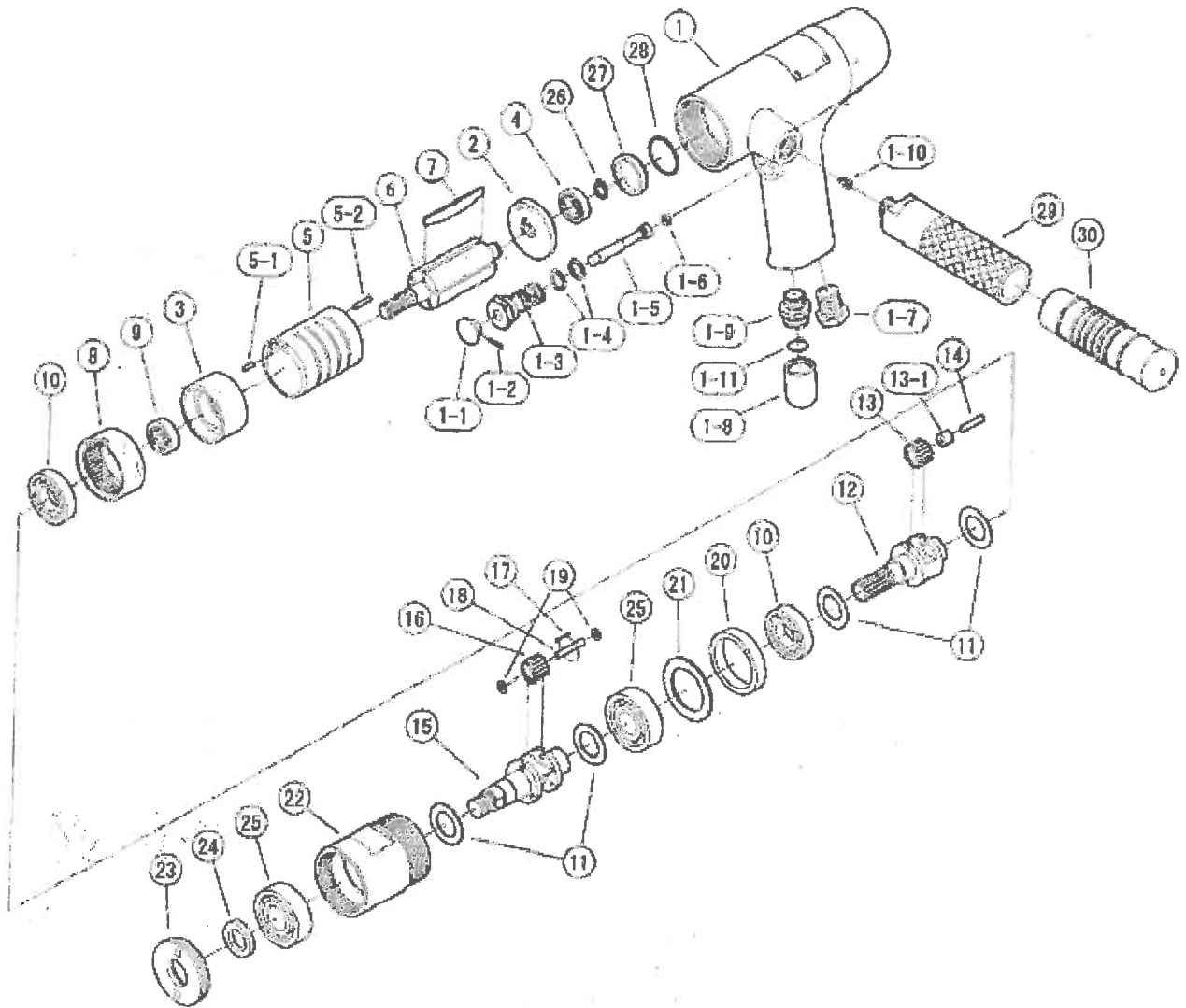


EXPLODED

KDR-1301



REF. NO.	PART NO.	PART NAME	Q'TY	REF. NO.	PART NO.	PART NAME	Q'TY
1	4013081	MOTOR CASE C.P.	1	10	Z00116003	BALL BEARING	2
1-1	4060112	THROTTLE BUTTON	1	11	4013126	SPACER	4
1-2	Z0562X12	SPRING PIN	1	12	4013132	GEAR FRAME	1
1-3	4013110	THROTTLE VALVE SEAT	1	13	4013133	NO.1 IDLER GEAR	1
1-4	Z040P10	O-RING	2	13-1	Z0080408	NEEDLE BEARING	2
1-5	4013113	THROTTLE VALVE PIN	1	14	Z0574X178	NEEDLE ROLLER	2
1-6	Z040P5	O-RING	1	15	4013130	SHAFT	1
1-7	2263142	INLET BUSHING	1	16	4013134	NO.2 IDLER GEAR	3
1-8	4060191	EXHAUST MUFFLER	1	17	Z05715X118	NEEDLE ROLLER	33
1-9	4080142	EXHAUST JOINT	1	18	Z0574X218	NEEDLE ROLLER	3
1-10	Z0765X8B	SET SCREW	1	19	Z1014X8XD8	WASHER	6
1-11	Z041S14	O-RING	1	20	4013136	BEARING RECEIVER	1
2	4013124	REAR END PLATE	1	21	4013125	THRUST PLATE	1
3	4013123A	FRONT END PLATE	1	22	4013102	FRONT CASE	1
4	Z0016900	BALL BEARING	1	23	4013135	HOLDER	1
5	4013120	CYLINDER	1	24	Z01616244	OIL SEAL	1
5-1	Z0563X8	SPRING PIN	1	25	Z0016203	BALL BEARING	2
5-2	Z0563X14	SPRING PIN	1	26	Z0329	RETAINER RING	1
6	4013121	ROTOR	1	27	4013150	GAP	1
7	4013122	ROTOR BLADE	5	28	Z041S24	O-RING	1
8	4013131	INTERNAL GEAR	1	29	0120292	DEAD HANDLE	1
9	Z0016001	BALL BEARING	1	30	Z1075627	GRIP	1

SPECIFICATIONS (Performance figures are at 0.62 MPa(Pe) (90 P.S.I) air pressure)

Model : KDR-1301

Description : PNEUMATIC DRILL

Weight (with chuck)	2.52 kg.	5.5 lbs.
Length (with chuck)	262 mm	10-5/16 in.
Height	160 mm	6-5/16 in.
Drilling Capacity	13 mm	9/16 in.
Air Consumption	0.55 m³/min	19.6 c.f.m.
Free Speed	700 r.p.m.	
Size of Inlet Bushing	1/4 in.	

▲Warning

- Use only drill accessories manufactured for use on pneumatic drills
- Ensure lubricant specifications. Some lubricants may create a fire or explosion.
- Wear proper protection equipments to protect from any flying particles.
- Wear proper protection equipments to avoid exposure from dusts or chemicals.
- Do not use damaged or worn accessories.
- Ensure to unplug the air hose when removing or attaching accessories.
- Ensure to remove the chuck key after attaching drill accessories.
- Ensure to tighten the drill accessory in drill chuck before operating.

▲Caution

ISSUED BY :  KUKEN CO., LTD.

ADDRESS : 3-6-15 NONOUE, HABIKINO-SHI, OSAKA 583-0871 JAPAN

TEL : + 81 - 72 - 953 - 3346

FAX : + 81 - 72 - 953 - 0605

WEB-SITE : <http://www.kuken.co.jp/english/>

E-MAIL : export1@kuken.co.jp



OCTOBER 5, 2010
DATE ISSUED


MANAGING DIRECTOR