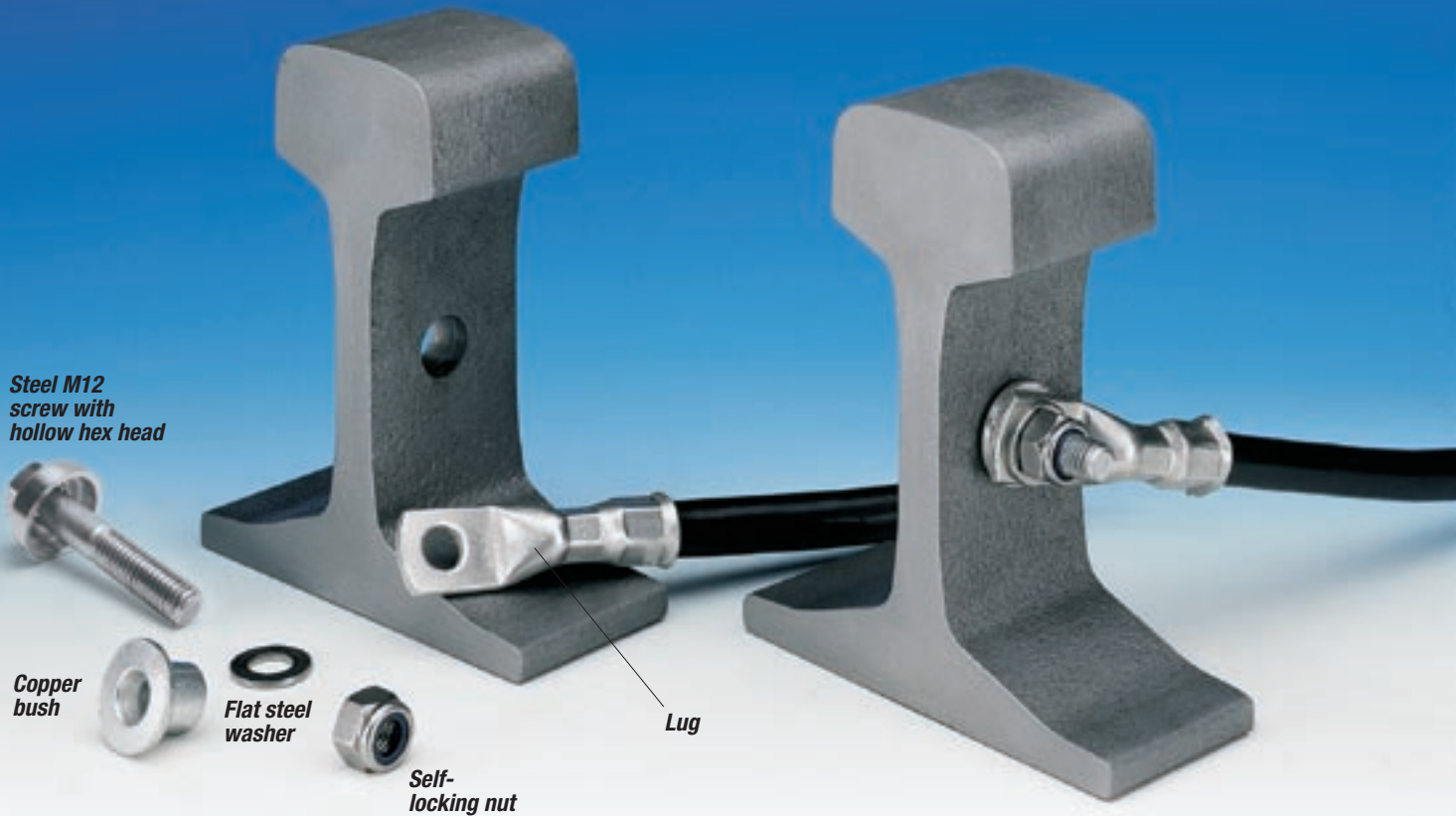


RAIL WEB ELECTRICAL CONNECTION SYSTEM FOR RETURN TRACTION AND EARTHING APPLICATIONS

AR 60D



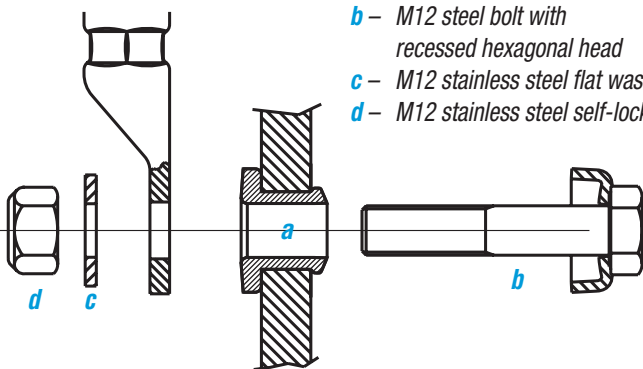
Rail web Permanent Electrical Contact type AR 60D, for hole diameter 19-20 mm

This unique system was designed and developed by Cembre in 1988 following a review of existing electrical connection systems. The aim of the Cembre system is to provide a low resistance interface between the rail web and the terminal lug. Following in-depth testing in the laboratory and extensive field trials, the system has been recognised and approved for total reliability.

- low electrical resistance (microhm)
- simple to install, not dependent on operator skill level
- quick and easy to install (less than one minute)
- easy to connect/disconnect cables, for fault finding

System components:

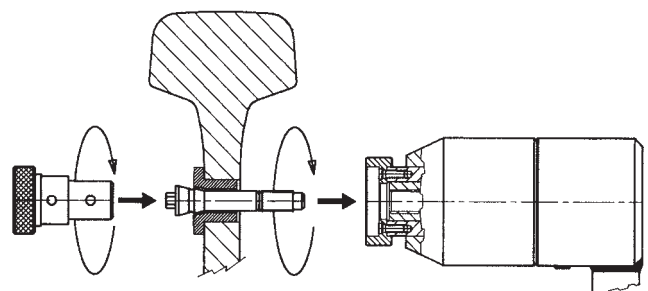
- a** – AR 60-1: Electrolytically tin plated copper bush
- b** – M12 steel bolt with recessed hexagonal head
- c** – M12 stainless steel flat washer
- d** – M12 stainless steel self-lock nut



Installation Tooling:

HTEP hydraulic tool

RHTEP head for connection to a hydraulic pump



AR 60D ASSEMBLY

