

# DRILLING MACHINES

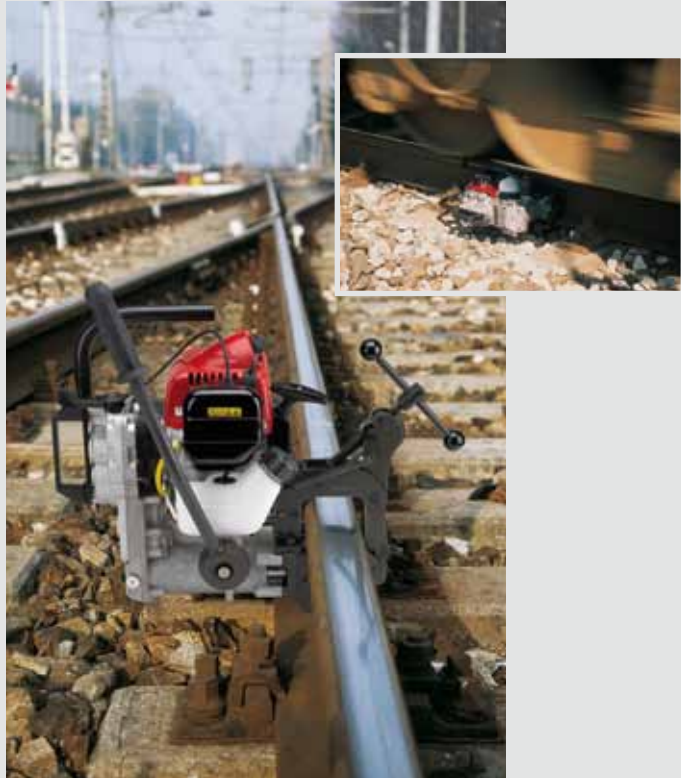
conforming to  
**EN13977**  
conforming to

Cembre Rail Drilling Machines, **LD-1P** and **LD-2E**, have been specifically designed for use in Railway applications, to provide a consistent and accurate hole, in all types of weather conditions. Due to their compact size, our drill can save considerable time by allowing direct operation in cases which would normally require removal of obstructions. Special twist drill bits can be used for hole diameters 7 to 22 mm on rail up to 45 mm thick. Whilst broach cutters can be used for hole diameters 13 to 33 mm on rails up to 50 mm thick. The drills are provided with a coolant system consisting of a reservoir and pump for use with suitable cooling lubricants. Connection to the rail drill is by a quick coupler. The units are lightweight and ideally suited for one man operation.

## LD-1P

### GENERAL FEATURES:

- **Drilling range:** Ø 7÷33 mm
- **with broach cutters:** Ø 13-33 mm, on rails up to 50 mm thick.
- **with special spiral bits:** Ø 7-22 mm, on rails up to 45 mm thick.
- **Engine:** 2 stroke • **Displacement:** 48,6 cc
- **Fuel:** 2% oil/petrol mixture • **Start:** by rope pull
- **Clutch:** centrifugal with automatic intervention
- **Power:** 1,4 kW @ 6500 RPM
- **Weight:** with DBG-F2 clamping device 19 kg



## LD-2E

### GENERAL FEATURES:

- **Drilling range:** Ø 7÷33 mm
- **with broach cutters:** Ø 13-33 mm, on rails up to 50 mm thick.
- **with special spiral bits:** Ø 7-22 mm, on rails up to 45 mm thick.
- **Electric single phase motor:**
  - supply voltage: 220/230 V - 50 Hz
  - power rating: 1800 W
- **Weight:** with DBG-F2 clamping device 17 kg

Also available in:

110 V - 50/60 Hz version (**LD-2E-110**)

