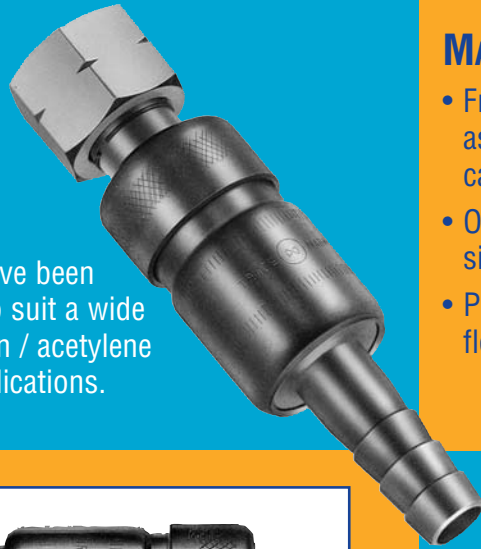


MINI CUPLA

SPECIFIC TYPE FOR OXYGEN / ACETYLENE EQUIPMENT

- All types of connections have been standardised to suit a wide range of oxygen / acetylene equipment applications.



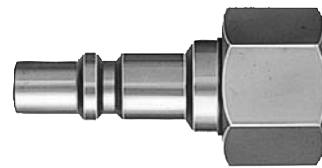
MANY VARIATIONS WITH HIGH FLOW RATES!

- From regulator to torch, all piping connections associated with oxygen / acetylene equipment can be done quickly by one-touch operation.
- Oxygen and fuel gas fittings are in different sizes to prevent accidental inter-connection.
- Pressure loss is minimised to enable high flow rate.



FOR REGULATOR CONNECTION (SF)

Usage	Code	Application
For Oxygen	22SF	5/8" UNF
For Fuel Gas	33SF	5/8" UNF L/H Thread



FOR TORCH CONNECTION (PF)

Usage	Code	Application
For Oxygen	22PF	5/8" UNF
For Fuel Gas	33PF	5/8" UNF L/H Thread



FOR HOSE CONNECTION (SH)

Usage	Code	Application
For Oxygen	22SH	For 1/4" hose
For Fuel Gas	32SH	For 1/4" hose



FOR HOSE CONNECTION (PH)

Usage	Code	Application
For Oxygen	22PH	For 1/4" hose
For Fuel Gas	32PH	For 1/4" hose

DISTRIBUTED BY: