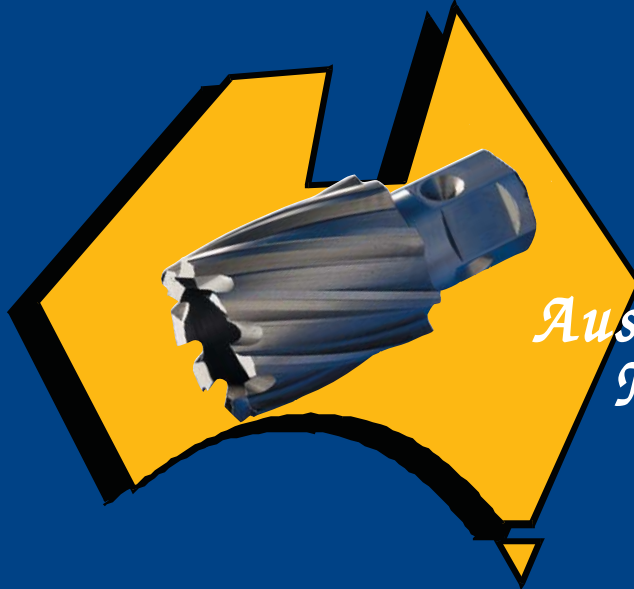


# **OZBROACH™** HIGH SPEED STEEL CUTTERS

Cat. No. AA-05



*Australian  
Made!*

## ONE-TOUCH TYPE

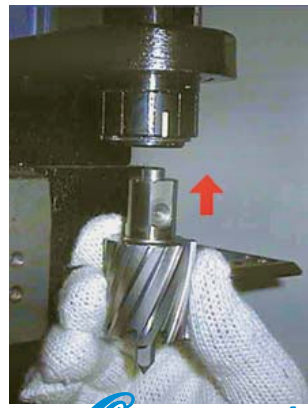
For use with most  
Magnetic Base Drills

# ATRA ACE



# NITTO

NITTO KOHKI AUSTRALIA PTY LTD



*One-Touch*



*Quick*  
Manual with Overload Protection



*Powerful*



*Automatic*

WA-5000

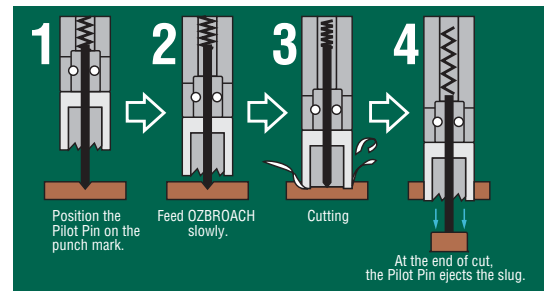


## CUTTERS FOR FASTER AND CLEANER HOLE FINISHES

**OZBROACH™** Cutters are far superior than twist drills

- No dead point
- Peripheral cutting
- Cutting load reduced by 50%

### HOLE CUTTING MECHANISM

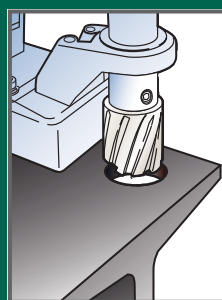


### FEATURES OF OZBROACH™ CUTTERS

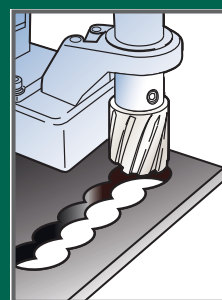
- Made of quality, high speed steel
- No tools needed for replacement when used with Atra Ace drilling machines
- Self-centering to extend cutter life
- Single pass cutting needs no pilot hole
- Only the edge of the hole is cut, thus reducing drilling time
- Produces less swarf than conventional drilling
- Fits all magnetic base drills with side lock arbour



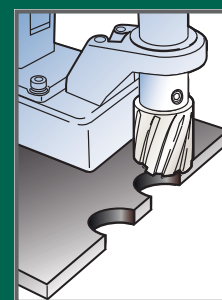
### POSSIBLE APPLICATIONS



Cutting in H-beams

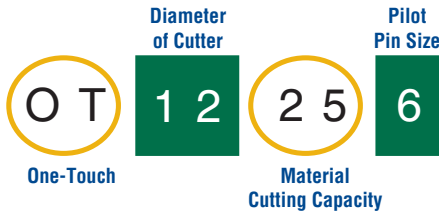


Overlapped cutting



Edge-hole cutting





# HIGH SPEED CUTTERS ONE-TOUCH TYPE

## SIZES AVAILABLE

CUTTER DIAMETER	SUPPLIER PART No.		CUTTER DIAMETER	SUPPLIER PART No.	
	25MM DEPTH			50MM DEPTH	
12mm	OT12256		12mm	OT12506	
13mm	OT13256		13mm	OT13506	
14mm	OT14256		14mm	OT14506	
15mm	OT15256		15mm	OT15506	
16mm	OT16258		16mm	OT16508	
17mm	OT17258		17mm	OT17508	
18mm	OT18258		18mm	OT18508	
19mm	OT19258		19mm	OT19508	
20mm	OT20258		20mm	OT20508	
21mm	OT21258		21mm	OT21508	
22mm	OT22258		22mm	OT22508	
23mm	OT23258		23mm	OT23508	
24mm	OT24258		24mm	OT24508	
25mm	OT25258		25mm	OT25508	
26mm	OT26258		26mm	OT26508	
27mm	OT27258		27mm	OT27508	
28mm	OT28258		28mm	OT28508	
29mm	OT29258		29mm	OT29508	
30mm	OT30258		30mm	OT30508	
31mm	OT31258		31mm	OT31508	
32mm	OT32258		32mm	OT32508	
33mm	OT33258		33mm	OT33508	
34mm	OT34258		34mm	OT34508	
35mm	OT35258		35mm	OT35508	
36mm	OT36258		36mm	OT36508	
37mm	OT37258		37mm	OT37508	
38mm	OT38258		38mm	OT38508	
39mm	OT39258		39mm	OT39508	
40mm	OT40258		40mm	OT40508	
41mm	OT41258		41mm	OT41508	
42mm	OT42258		42mm	OT42508	
43mm	OT43258		43mm	OT43508	
44mm	OT44258		44mm	OT44508	
45mm	OT45258		45mm	OT45508	
46mm	OT46258		46mm	OT46508	
47mm	OT47258		47mm	OT47508	
48mm	OT48258		48mm	OT48508	
49mm	OT49258		49mm	OT49508	
50mm	OT50258		50mm	OT50508	

Sizes 51mm - 65mm diameter available in Jetbroach (Tungsten Carbide)

### HIGH SPEED STEEL LOCATING PINS

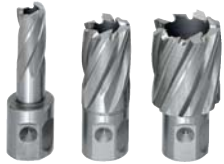
Suit Ozbroach High Speed Steel Cutters

25mm Depth 6mm $\phi$	NAP0625	50mm Depth 6mm $\phi$	NAP0650
25mm Depth 8mm $\phi$	NAP0825	50mm Depth 8mm $\phi$	NAP0850

6mm Pins suit sizes 12 to 15mm diameter

8mm Pins suit sizes 16 to 50mm diameter

Selected Imperial Size Cutters Available



# NITTO ATRACE

**"THE NEXT GENERATION"**

**'ONE-TOUCH' MAGNETIC CUTTING UNITS**



**WA-5000**  
**AUTOMATIC**

**SPECIFICATIONS - WA-5000**

Power Source: 220V - 240V AC Single phase  
 Rated Power Consumption: 1150 W  
 No Load Speed: 350/650 (rpm)  
 Hole Cutting Capacity One-Touch Ozbroach 50L  
 Hole Diam: 14 to 50mm  
 Hole Cutting Capacity One-Touch Jetbroach 75L  
 Hole Diam: 14 to 50mm  
 Plate Thickness: 9 to 75mm  
 Magnet Holding Power: 1000 kgf  
 Weight: 23 kg



**AO-5575**  
**MANUAL**

**75mm**  
**cutting**  
**depth**

**SPECIFICATIONS - AO-5575**

Power Source: 220V - 240V AC Single phase  
 Rated Power Consumption: 1150 W  
 No Load Speed: 350/650 (rpm)  
 Hole Cutting Capacity One-Touch Ozbroach 50L  
 Hole Diam: 12 to 55mm  
 Hole Cutting Capacity One-Touch Jetbroach 75L  
 Hole Diam: 12 to 55mm  
 Plate Thickness: 9 to 75mm  
 Magnet Holding Power: 1020 kgf  
 Weight: 18 kg



**WO-3250**  
**MANUAL**

**50mm**  
**cutting**  
**depth**

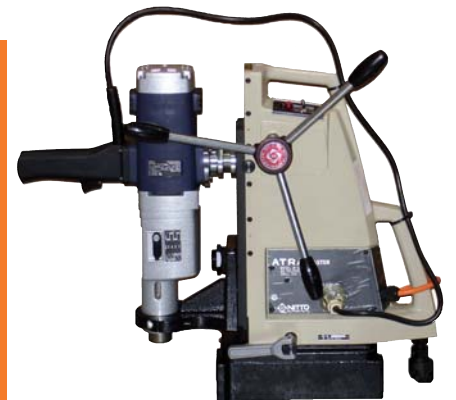
**One-Touch**  
**Chuck**

**SPECIFICATIONS - WO-3250**

Power Source: 220V - 240V AC Single phase  
 Rated Power Consumption: 950 W  
 No Load Speed: 530 (rpm)  
 Hole Cutting Capacity One-Touch Ozbroach 50L  
 Hole Diam: 12 to 32mm  
 Hole Cutting Capacity One-Touch Jetbroach 75L  
 Hole Diam: 12 to 32mm  
 Plate Thickness: 9 to 50mm  
 Magnet Holding Power: 900 kgf  
 Weight: 13 kg

**SPECIFICATIONS - M320 AEG**

Power Source: 220V - 240V AC Single phase  
 Rated Power Consumption: 1500 W  
 Free Speed: 220/250/350/420 (rpm)  
 Load Speed: 115/160/190/260 (rpm)  
 Hole Cutting Capacity:  
 3 Morse Taper Jetbroach Holder 50mm  
 3 Morse Taper Holder 280mm Stroke  
 Hole Diameter:  
 One-Touch Ozbroach: 12 to 50mm  
 One-Touch Jetbroach: 12 to 65mm  
 Sidelock Jetbroach: 51 to 100mm  
 Twist Drills: 32mm  
 Plate Thickness: 13mm (min)  
 Magnet Holding Power: 1800 kgf  
 Weight: 43 kg



**M320 AEG**



**DISTRIBUTED BY:**